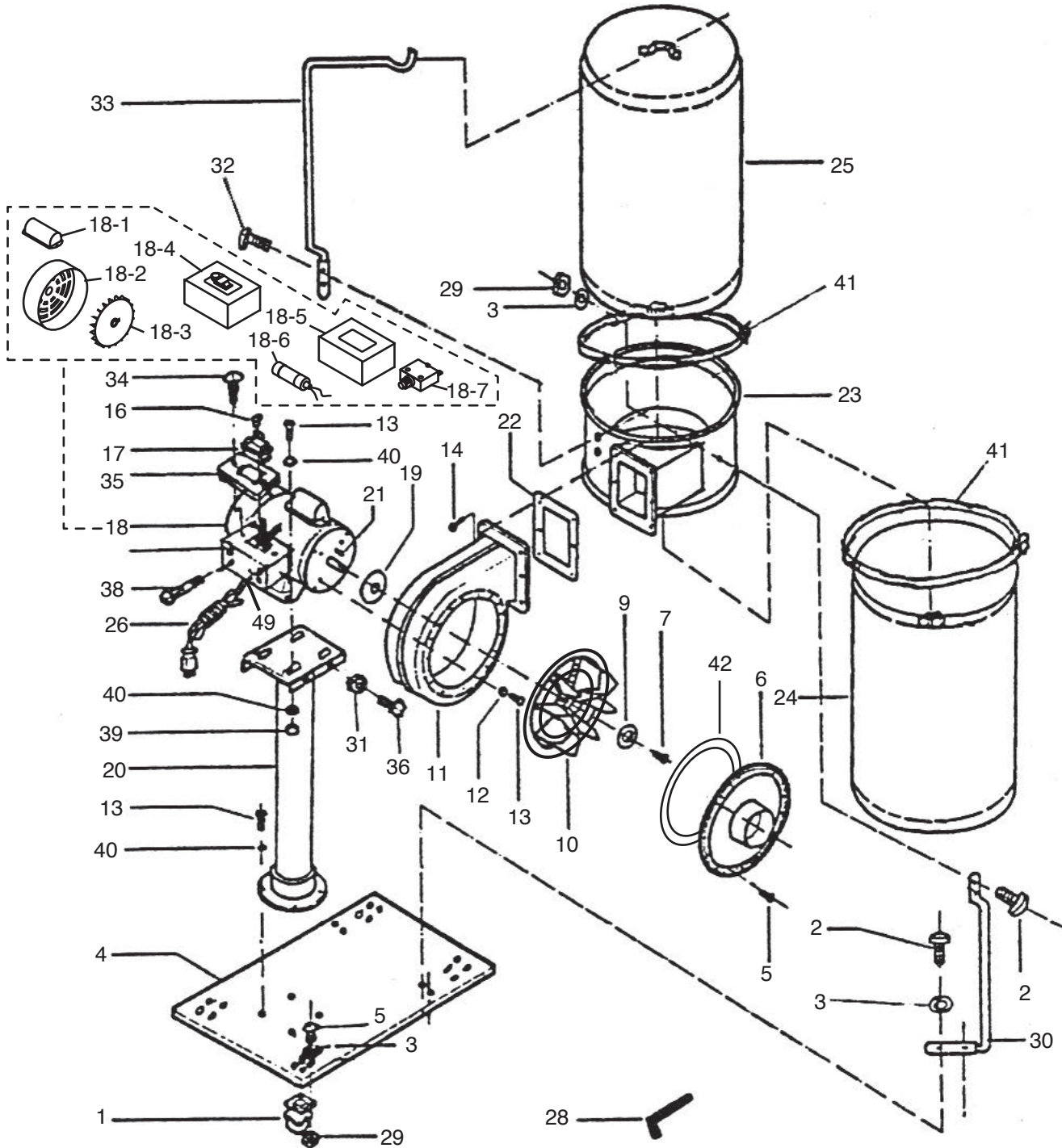


SECTION 9: PARTS

We do our best to stock replacement parts when possible, but we cannot guarantee that all parts shown are available for purchase. Call (800) 523-4777 or visit www.grizzly.com/parts to check for availability.

Main



Main Parts List

REF	PART #	DESCRIPTION
1	P8027001	SWIVEL CASTER
2	P8027002	PHLP HD SCR M5-.8 X 15
3	P8027003	FLAT WASHER 5MM
4	P8027004	BASE PLATE
5	P8027005	PHLP HD SCR M5-.8 X 10
6	P8027006	INLET COVER
7	P8027007	CAP SCREW M6-1 X 20 LH
9	P8027009	FENDER WASHER 6MM
10	P8027010	IMPELLER
11	P8027011	IMPELLER HOUSING
12	P8027012	LOCK WASHER 8MM
13	P8027013	HEX BOLT M8-1.25 X 15
14	P8027014	HEX BOLT M6-1 X 15
16	P8027016	SWITCH SAFETY KEY
17	P8027017	PADDLE SWITCH KEDU HY18
18	P8027018	MOTOR 1HP 110V 1-PH
18-1	P8027018-1	CAPACITOR COVER
18-2	P8027018-2	MOTOR FAN COVER
18-3	P8027018-3	MOTOR FAN
18-4	P8027018-4	COMPLETE SWITCH BOX
18-5	P8027018-5	SWITCH BOX COVER
18-6	P8027018-6	S CAPACITOR 200M 125V 1-1/2 X 2-3/4
18-7	P8027018-7	OL SWITCH YINXIANG 9A 125/250V 50VDC

REF	PART #	DESCRIPTION
19	P8027019	RUBBER GASKET
20	P8027020	COLUMN & MOTOR PLATE
21	P8027021	FLAT PIN 5 X 30
22	P8027022	RUBBER GASKET
23	P8027023	COLLECTOR
24	P8027024	COLLECTION BAG
25	P8027025	FILTER BAG 2.5 MICRON 14.5" X 23"
26	P8027026	POWER CORD 16G 3W 73"
28	P8027028	HEX WRENCH 5MM
29	P8027029	HEX NUT M5-.8
30	P8027030	COLLECTOR BAG SUPPORT ROD
31	P8027031	HEX NUT M6-1
32	P8027032	PHLP HD SCR M4-.7 X 8
33	P8027033	UPPER BAG SUPPORT ROD
34	P8027034	TAP SCREW M4 X 12
35	P8027035	SWITCH PLATE
36	P8027036	HEX BOLT M6-1 X 25
38	P8027038	CAP SCREW M6-1 X 6
39	P8027039	HEX NUT M8-1.25
40	P8027040	FLAT WASHER 8MM
41	P8027041	BAG CLAMP 48"
42	P8027042	RUBBER GASKET
49	P8027049	STRAIN RELIEF TYPE-1 5/8



Labels & Cosmetics

43V3

Grizzly Industrial MODEL G8027
1 HP DUST COLLECTOR

Specifications

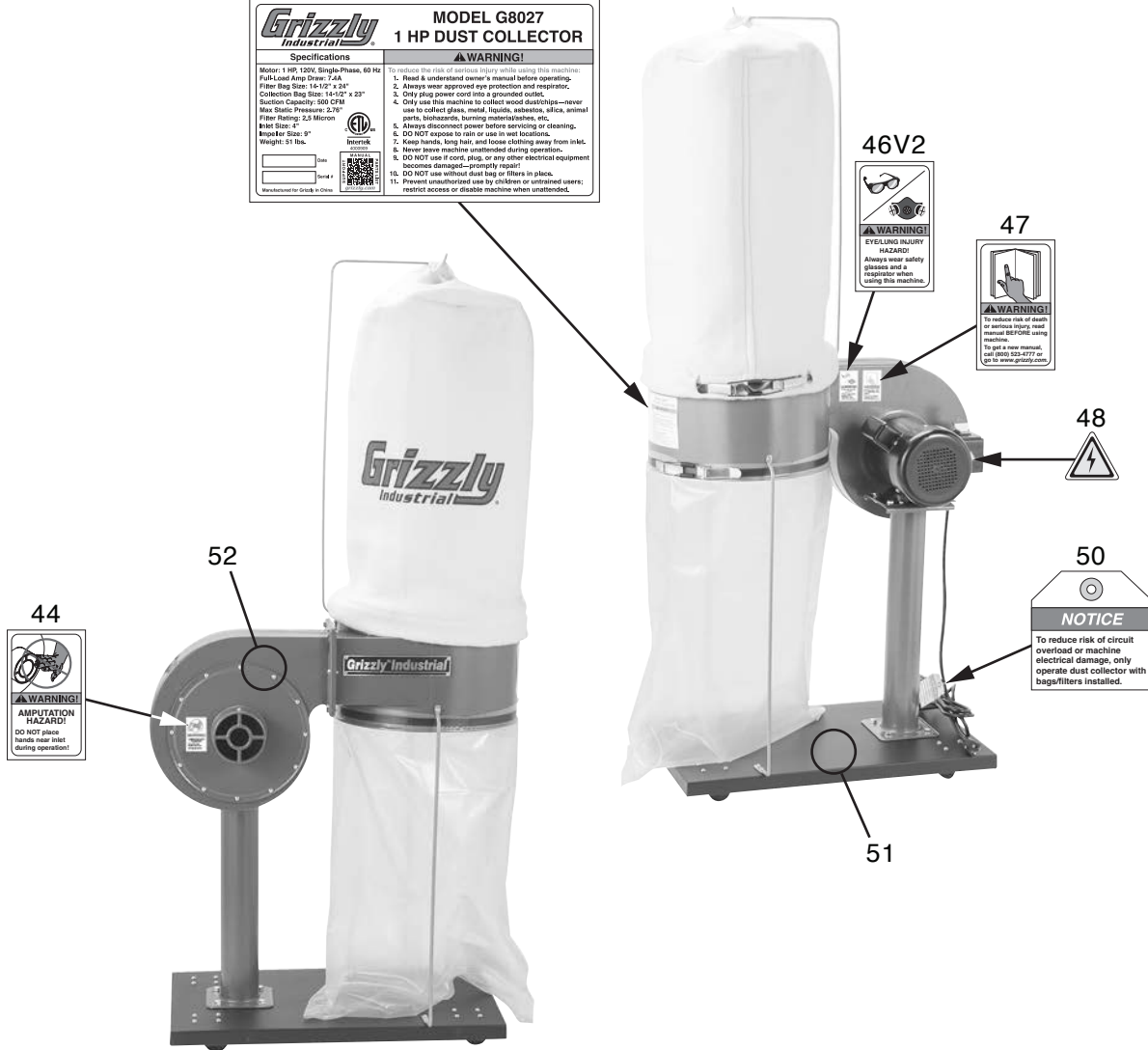
Motor: 1 HP, 120V, Single-Phase, 60 Hz
Full-Load Amp Draw: 2.6A
Filter Bag Size: 14-1/2" x 24"
Collection Bag Size: 14-1/2" x 23"
Suction Capacity: 500 CFM
Max Static Pressure: 2.70"
Filter Rating: 2.5 Micron
Inlet Size: 4"
Impeller Size: 9"
Weight: 51 lbs.

WARNING!

To reduce the risk of serious injury while using this machine:

1. Read & understand owner's manual before operating.
2. Always wear approved eye protection and respirator.
3. Only plug power cord into a grounded outlet.
4. Only use this machine to collect wood dustchips—never use to collect glass, metal, liquids, asbestos, silica, animal parts, biohazards, burning materials/ashes, etc.
5. Always disconnect power before servicing or cleaning.
6. DO NOT expose to rain or use in wet locations.
7. Keep hands, long hair, and loose clothing away from in let.
8. Never leave machine unattended during operation.
9. DO NOT use if cord, plug, or any other electrical equipment becomes damaged—promptly repair.
10. DO NOT use without dust bag or filters in place.
11. Prevent unauthorized use by children or untrained users; restrict access or disable machine when unattended.

Manufactured by Grizzly in China



REF	PART #	DESCRIPTION
43V3	P8027043V3	MACHINE ID LABEL V3.04.24
44	P8027044	NO HAND IN INLET LABEL
46V2	P8027046V2	EYE/LUNG INJURY LABEL V2.09.23
47	P8027047	READ MANUAL LABEL

REF	PART #	DESCRIPTION
48	P8027048	ELECTRICITY LABEL
50	P8027050	CIRCUIT OVERLOAD HANG TAG
51	P8027051	TOUCH-UP PAINT, GRIZZLY BLACK
52	P8027052	TOUCH-UP PAINT, GRIZZLY GREEN

⚠️ WARNING

Safety labels help reduce the risk of serious injury caused by machine hazards. If any label comes off or becomes unreadable, the owner of this machine **MUST** replace it in the original location before resuming operations. For replacements, contact (800) 523-4777 or www.grizzly.com.

