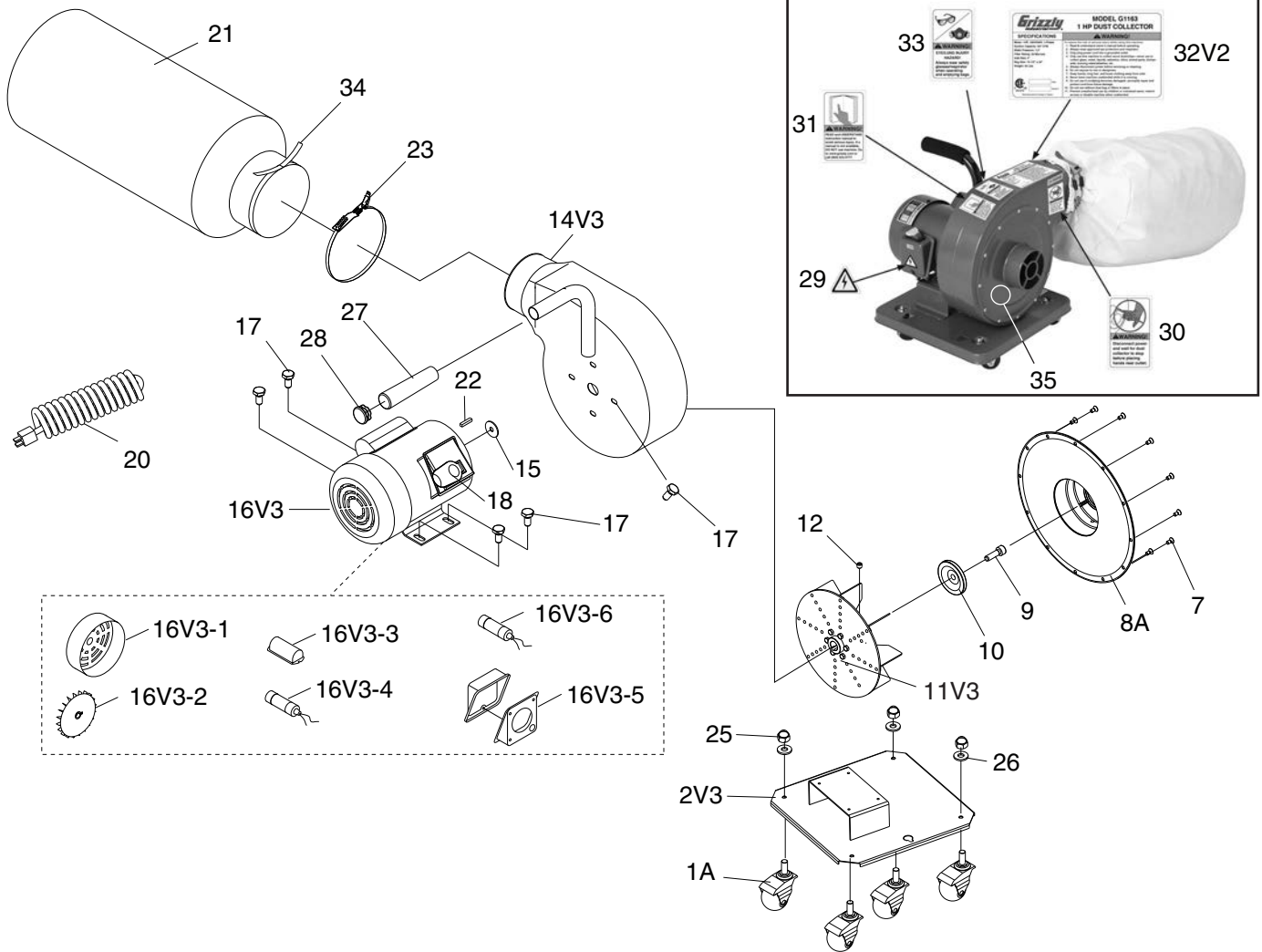


SECTION 9: PARTS

G1163 Main Breakdown



REF	PART #	DESCRIPTION
1A	P1163001A	CASTER V2.09.01
2V3	P1163002V3	BASE V3.12.09
7	PS09M	PHLP HD SCR M5-.8 X 10
8A	P1163008A	INLET COVER 11" V2.01.06
9	PSB121M	CAP SCREW M6-1 X 20 (LH)
10	P1028009	MOTOR FAN WASHER
11V3	P1163011V3	IMPELLER 10", CAST ALUMINUM V3.09.12
12	PSS02	SET SCREW 5/16-18 X 3/8
14V3	P1163014V3	BODY W HANDLE V3.12.09
15	P1032019	GASKET
16V3	P1163016V3	MOTOR 1HP 120V/240V 1-PH V3.09.11
16V3-1	P1163016V3-1	FAN COVER
16V3-2	P1163016V3-2	MOTOR FAN
16V3-3	P1163016V3-3	CAPACITOR COVER
16V3-4	PC200F	S CAPACITOR 200M 125V 1-3/8 X 2-3/4
16V3-5	P1163016V3-5	JUNCTION BOX
16V3-6	PC30	R CAPACITOR 30M 250V 1-3/8 X 2-1/2

REF	PART #	DESCRIPTION
17	PFB03	FLANGE BOLT 1/4-20 X 1/2
18	G8988	PADDLE SWITCH 110V/220V
20	PWRCRD110L	POWER CORD 16G X 3W 73"L
21	G3591	REPLACEMENT BAG FOR G1163
22	PK23M	KEY 5 X 5 X 25
23	P1163023	CLAMP
25	PN40	ACORN NUT 5/16-18
26	PW07	FLAT WASHER 5/16
27	P1163027	HANDLE COVER
28	PFB03	HANDLE CAP
29	PLABEL-14	ELECTRICITY LABEL
30	P1028Z041	HANDS/OUTLET LABEL
31	PLABEL-12A	READ MANUAL LABEL
32V2	P1163032V2	ID LABEL CSA V2.09.11
33	PLABEL-57	GLASSES/RESPIRATOR LABEL
34	P1163034	FOAM STRIP 4 X 20 X 430MM
35	PPAINT-1	GRIZZLY GREEN PAINT

