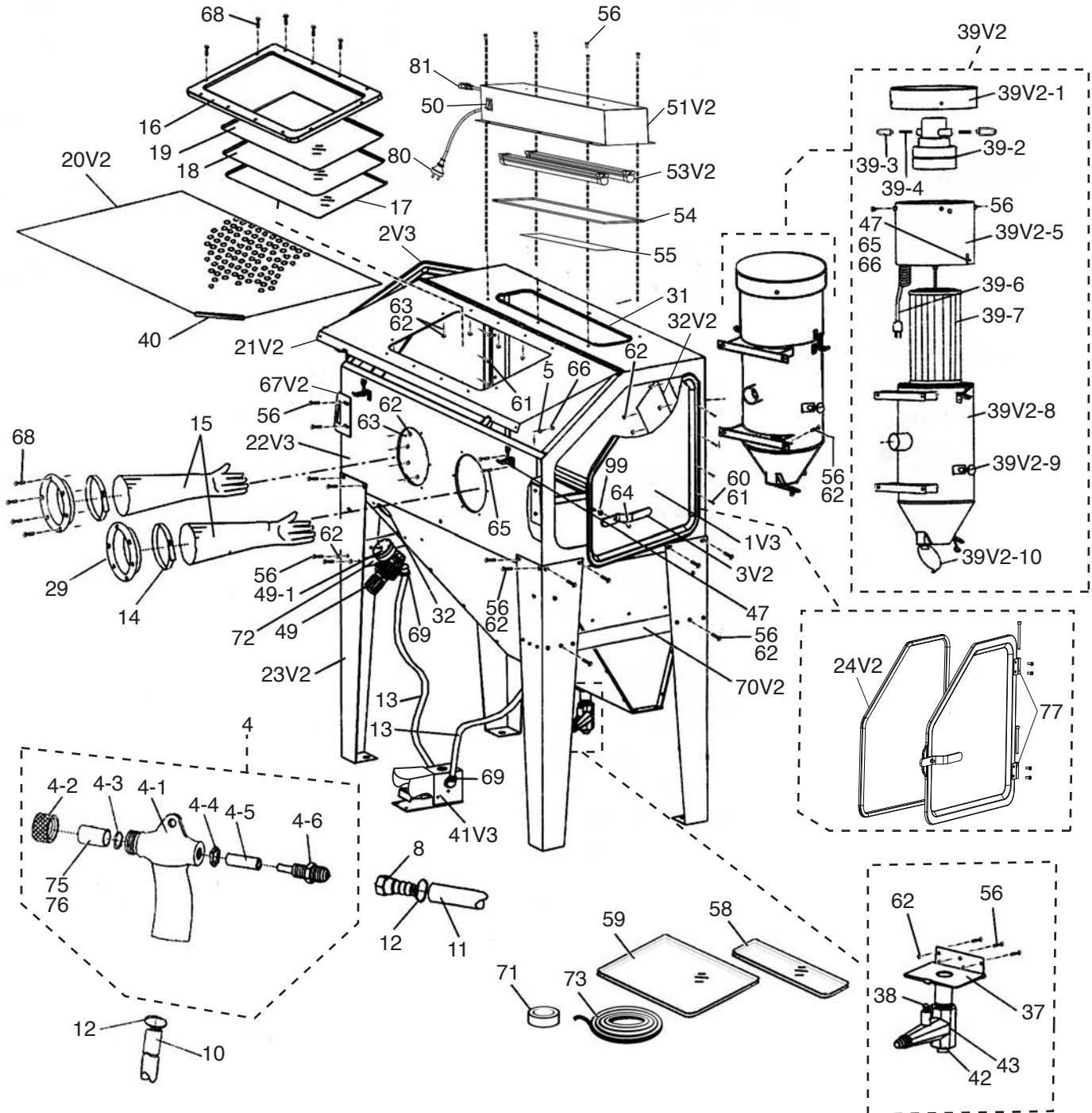


SECTION 9: PARTS

We do our best to stock replacement parts when possible, but we cannot guarantee that all parts shown are available for purchase. Call (800) 523-4777 or visit www.grizzly.com/parts to check for availability.

Main



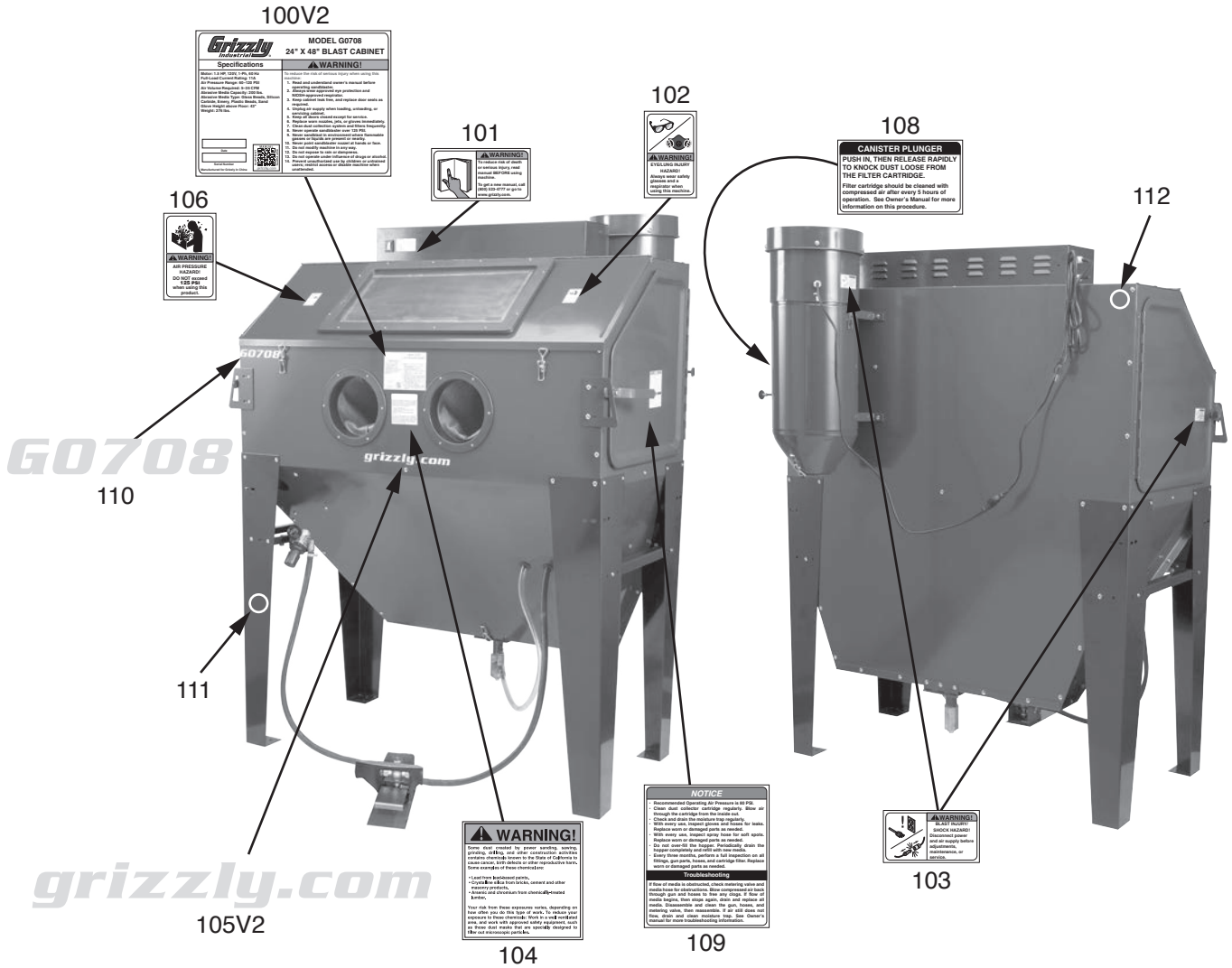
Main Parts List

REF	PART #	DESCRIPTION
1V3	P0708001V3	RIGHT DOOR V3.12.23
2V3	P0708002V3	LEFT DOOR V2.12.23
3V2	P0708003V2	DOOR LEVER V2.12.23
4	P0708004	BLAST GUN ASSEMBLY
4-1	P0708004-1	BLAST GUN BODY
4-2	P0708004-2	NOZZLE NUT
4-3	P0708004-3	O-RING 17.8 X 2.4 P18
4-4	P0708004-4	BRASS JET NUT
4-5	P0708004-5	AIR JET SLEEVE
4-6	P0708004-6	AIR JET
5	P0708005	FLAT WASHER 4MM
8	P0708008	PUSH-ON SWIVEL FITTING 3/8"
10	P0708010	MEDIA HOSE 1/2" ID
11	P0708011	AIR HOSE 1/2" ID
12	P0708012	HOSE CLAMP 1/2"
13	P0708013	AIR HOSE
14	P0708014	GLOVE CLAMP
15	P0708015	SANDBLASTING GLOVES
16	P0708016	WINDOW FRAME
17	P0708017	WINDOW FILM 21-1/2" X 9-3/4"
18	P0708018	VIEWING WINDOW GLASS
19	P0708019	PLEXIGLASS WINDOW
20V2	P0708020V2	WORK TABLE V2.12.23
21V2	P0708021V2	FRONT LOADING DOOR V2.12.23
22V3	P0708022V3	BLAST CABINET BODY V3.12.23
23V2	P0708023V2	LEG V2.12.23
24V2	P0708024V2	DOOR GASKET V2.01.21
29	P0708029	GLOVE MOUNTING RING
31	P0708031	SEAL
32V2	P0708032V2	BAFFLE PLATE V2.12.23
36	P0708036	VENTED WORK TABLE
37	P0708037	DUMP CHUTE DOOR
38	P0708038	FLOW ADJUSTMENT SCREW
39V2	P0708039V2	DUST COLLECTOR ASSY V2.12.23
39V2-1	P0708039V2-1	MOTOR COVER V2.12.23
39-2	P0708039-2	UNIVERSAL MOTOR 110V
39-3	P0708039-3	PLASTIC/BRASS BRUSH HOLDER
39-4	P0708039-4	CARBON BRUSH
39V2-5	P0708039V2-5	MAIN HOUSING V2.12.23
39-6	P0708039-6	MALE POWER CORD 14G 3W

REF	PART #	DESCRIPTION
39-7	P0708039-7	CARTRIDGE FILTER 5-MICRON
39V2-8	P0708039V2-8	CANISTER V2.12.23
39V2-9	P0708039V2-9	CANISTER PLUNGER W/SPRING V2.12.23
39V2-10	P0708039V2-10	CLEANOUT DOOR V2.12.23
40	P0708040	RUBBER EDGE SEAL
41V3	P0708041V3	FOOT VALVE V3.12.23
42	P0708042	VALVE PLUG
43	P0708043	MEDIA METERING VALVE
47	P0708047	LATCH ASSEMBLY
49	P0708049	AIR PRESSURE REGULATOR W/GAUGE
49-1	P0708049-1	AIR PRESSURE GAUGE
50	P0708050	POWER SWITCH
51V2	P0708051V2	LAMP COVER V2.12.23
53V2	P0708053V2	LED BULB V2.12.23
54	P0708054	LAMP WINDOW GLASS
55	P0708055	WINDOW COVER FILM 21-1/2" X 4"
56	P0708056	PHLP HD SCR M6-1 X 12
58	P0708058	SMALL WINDOW COVER FILM (5 PACK)
59	P0708059	LARGE WINDOW COVER FILM (5 PACK)
60	P0708060	FLAT HD SCREW M5-.8 X 10
61	P0708061	HEX NUT M5-.8
62	P0708062	FLANGE NUT M6-1
63	P0708063	FLAT WASHER 6MM
64	P0708064	LOCK NUT M6-1
65	P0708065	PHLP HD SCR M4-.7 X 6
66	P0708066	HEX NUT M4-.7
67V2	P0708067V2	LATCH RECEIVER V2.12.23
68	P0708068	PHLP HD SCR M4-.7 X 25
69	P0708069	HOSE CLAMP 1/2"
70V2	P0708070V2	CROSS BRACE V2.12.23
71	P0708071	TEFLON TAPE
72	P0708072	REGULATOR MOUNTING BRACKET
73	P0708073	ADHESIVE DOOR SEAL 1/4" X 3/4" X 79"
75	P0708075	BLAST TIP 7MM ID
76	P0708076	BLAST TIP 6MM ID
77	P0708077	PIVOT HINGE
80	P0708080	MACHINE POWER CORD 14G 3W
81	P0708081	FEMALE POWER CORD 14G 3W
99	P0708099	FENDER WASHER 6MM



Labels & Cosmetics



REF	PART #	DESCRIPTION
100	P0708100	MACHINE ID LABEL
101	P0708101	READ MANUAL LABEL
102	P0708102	GLASSES/RESPIRATOR LABEL
103	P0708103	DISCONNECT AIR/POWER LABEL
104	P0708104	DUST WARNING LABEL
105V2	P0708105V2	GRIZZLY.COM LABEL V2.01.15

REF	PART #	DESCRIPTION
106	P0708106	AIR PRESSURE HAZARD LABEL
108	P0708108	FILTER CLEANING LABEL
109	P0708109	GENERAL WARNING LABEL
110	P0708110	MODEL NUMBER LABEL
111	P0708111	GRIZZLY TOUCH UP PAINT - BLACK
112	P0708112	GRIZZLY TOUCH UP PAINT - GREEN

⚠️ WARNING

Safety labels help reduce the risk of serious injury caused by machine hazards. If any label comes off or becomes unreadable, the owner of this machine **MUST** replace it in the original location before resuming operations. For replacements, contact (800) 523-4777 or www.grizzly.com.

