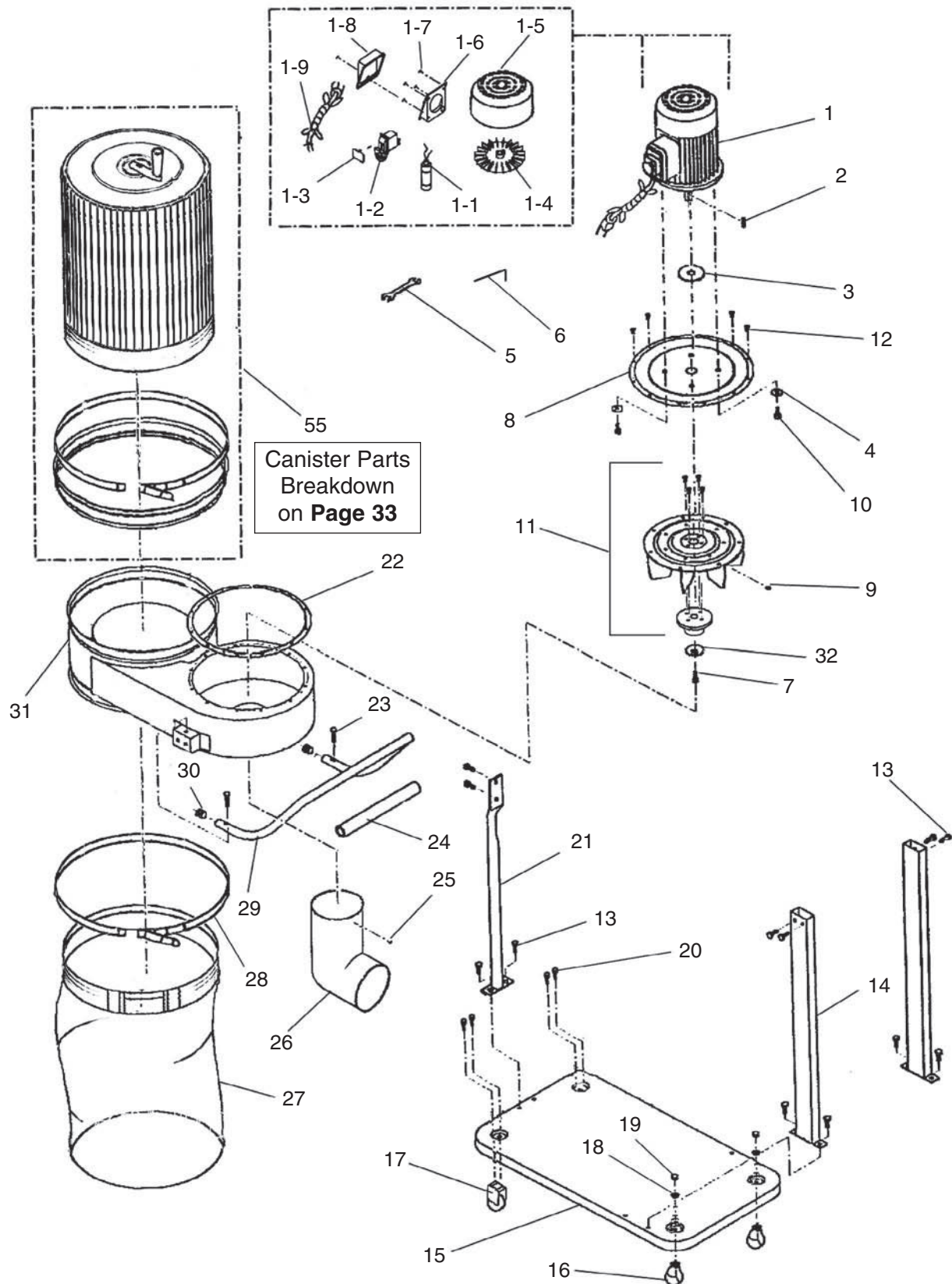


SECTION 10: PARTS

Main



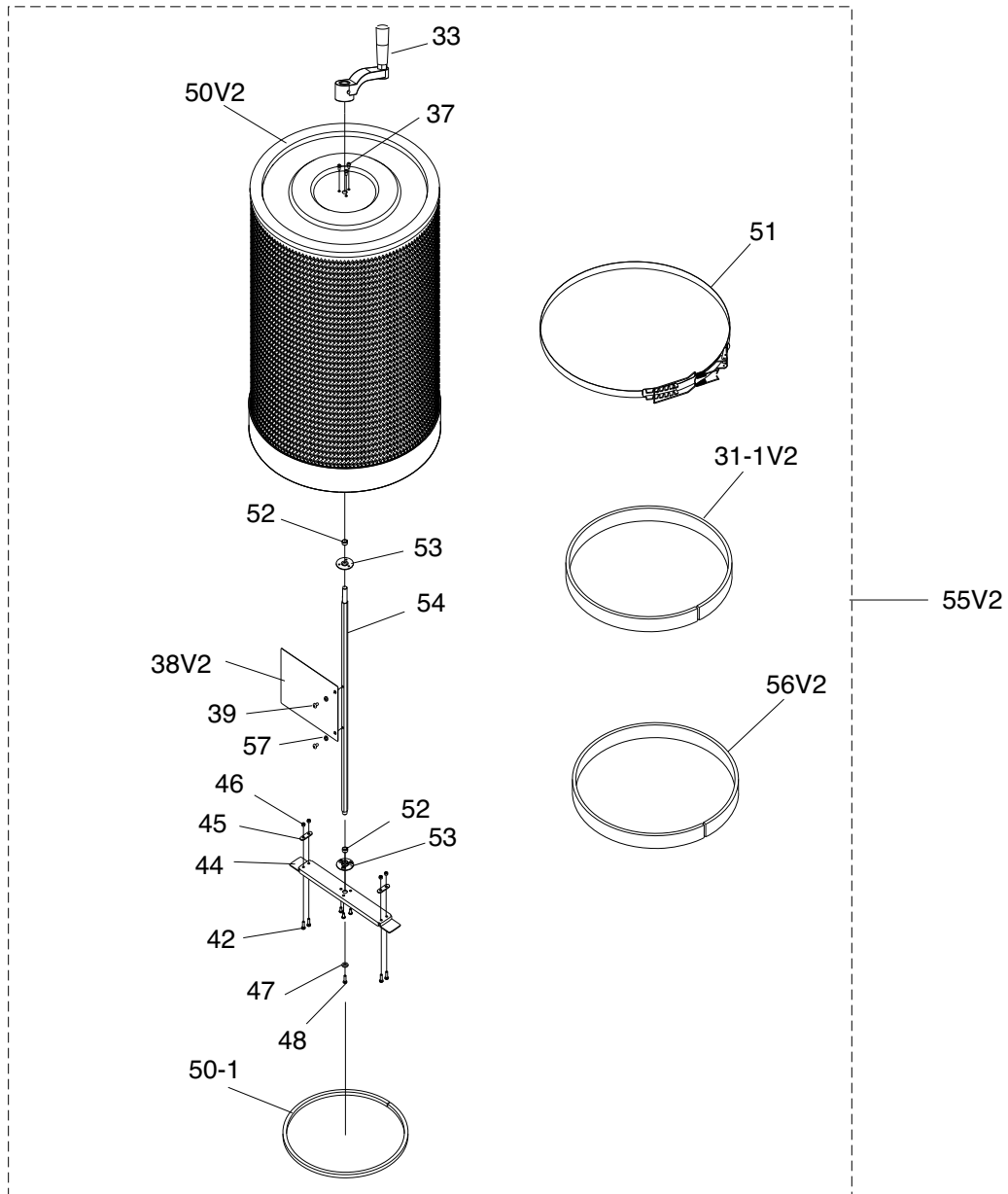
Main Parts List

REF	PART #	DESCRIPTION
1	P0583Z001	MOTOR 1HP 110V/220V1-PH
1-1	PC040A	S. CAPACITOR 40M 250V 1-3/8 X 2-3/8
1-2	PSW06	SWITCH
1-3	PSW06-1	SWITCH KEY
1-4	P0583Z001-4	FAN
1-5	P0583Z001-5	FAN COVER
1-6	P0583Z001-6	SWITCH HOUSING
1-7	PFS03	FLANGE SCR 10-24 X 3/8"
1-8	P0583Z001-8	SWITCH COVER
1-9	P0583Z001-9	POWER CORD
2	PK01M	KEY 5 X 5 X 22
3	P0583Z003	SHAFT SEAL
4	PW06	FLAT WASHER 1/4"
5	PWR1012	WRENCH 10-12MM
6	PAW05M	HEX WRENCH 5MM
7	PCAP02M	CAP SCREW M6-1 X 20
8	P0583Z008	INLET COVER
9	PSS17	SET SCREW 5/16"-18 X 5/16"
10	PB19	HEX BOLT 1/4"-20 X 1/2"
11	P0583Z011	IMPELLER ASSEMBLY10"
12	PS09M	PHLP HD SCR M5-8 X 10

REF	PART #	DESCRIPTION
13	PB09	HEX BOLT 5/16"-18 X 1/2"
14	P0583Z014	RECTANGLE SUPPORT LEG
15	P0583Z015	BASE
16	P0583Z016	SWIVEL CASTER
17	P0583Z017	FIXED CASTER
18	PW07	FLAT WASHER 5/16"
19	PN40	ACORN NUT 5/16"-18
20	PB04M	HEX BOLT M6-1.0 X 10
21	P0583Z021	ROUND SUPPORT LEG
22	P0583Z022	FOAM GASKET
23	PFH25	FLAT HD SCR 5/16"-18 X 1"
24	P0583Z024	FOAM HAND GRIP
25	PFS03	FLANGE SCR 10-24 X 3/8"
26	P0583Z026	ELBOW 4"
27	P0583Z027	DUST STORAGE BAG
28	P0583Z028	STORAGE BAG CLAMP
29	P0583Z029	HAND RAIL
30	P0583Z030	PLASTIC CAP 5/8"
31	P0583Z031	IMPELLER HOUSING
32	P0583Z032	CONCAVE WASHER 6MM
55V2	T23129	CANISTER FILTER V2.09.11



Canister Filter



REF	PART #	DESCRIPTION
55V2	T23129	CANISTER FILTER V2.09.11
31-1V2	P0583Z031-1V2	FOAM STRIP 6 X 20MM V2.09.11
33	P0583Z033	HANDLE
37	PS09M	PHLP HD SCR M5-.8 X 10
38V2	P0583Z038V2	PLASTIC FLAP BOARD V2.09.11
39	PS68M	PHLP HD SCR M6-1 X 10
42	PS20M	PHLP HD SCR M5-.8 X 15
44	P0583Z044	BOTTOM PLATE
45	P0583Z045	SUPPORT TAB
46	PN06M	HEX NUT M5-.8

REF	PART #	DESCRIPTION
47	PW06	FLAT WASHER 1/4
48	PS68M	PHLP HD SCR M6-1 X 10
50V2	P0583Z050V2	FILTER V2.09.11
50-1	P0583Z050-1	FOAM GASKET 10 X 15 MM
51	P0583Z051	METAL BELT CLAMP
52	PH5783005	THRUST BEARING 12 X 14 X 6
53	PH5783006	BEARING PLATE
54	P0583Z054	HEX SPINDLE
56V2	P0583Z056V2	FOAM STRIP 5 X 42MM V2.09.11
57	PW03M	FLAT WASHER 6MM



Labels

 MODEL G0583Z 1 HP DUST COLLECTOR WITH CANISTER	
Specifications Motor: 1 HP, 120V/240V, 1-Phase Max Amp Draw: 5A at 120V, 4.5A at 240V Motor Speed: 3450 RPM Suction Capacity: 800 CFM Max Static Pressure: 6.4" Filtration: 1 Micron Bag Size: 14-1/2" x 22" Bag Volume: 2.1 Cubic Feet Weight: 66 lbs.  _____ Date _____ Serial # <small>Manufactured for Grizzly in Taiwan</small>	⚠ WARNING! To reduce the risk of serious injury while using this machine: 1. Read & understand owner's manual before operating. 2. Always wear approved eye protection and respirator. 3. Only plug power cord into a grounded outlet. 4. Only use this machine to collect wood dustchips—never use to collect glass, metal, liquids, asbestos, silica, animal parts, biohazards, burning material/ashes, etc. 5. Always disconnect power before servicing or cleaning. 6. Do not expose to rain or dampness. 7. Keep hands, long hair, and loose clothing away from inlet. 8. Never leave machine unattended while it is running. 9. Do not use if cord/plug becomes damaged—promptly repair and protect cord from future damage. 10. Do not use without dust bag or filters in place. 11. Prevent unauthorized use by children or untrained users; restrict access or disable machine when unattended.

101V2



102



103



106



105



104

REF	PART #	DESCRIPTION
101V2	P0583Z101V2	MACHINE ID LABEL CSA V2.09.11
102	PLABEL-14	ELECTRICITY LABEL
103	PLABEL-59	HANDS NEAR INLET LABEL

REF	PART #	DESCRIPTION
104	PLABEL-61	RESPIRATOR LABEL
105	PLABEL-11A	SAFETY GLASSES LABEL
106	PLABEL-12A	READ MANUAL LABEL

⚠ WARNING

Safety labels warn about machine hazards and ways to prevent injury. The owner of this machine **MUST** maintain the original location and readability of the labels on the machine. If any label is removed or becomes unreadable, **REPLACE** that label before using the machine again. Contact Grizzly at (800) 523-4777 or www.grizzly.com to order new labels.

