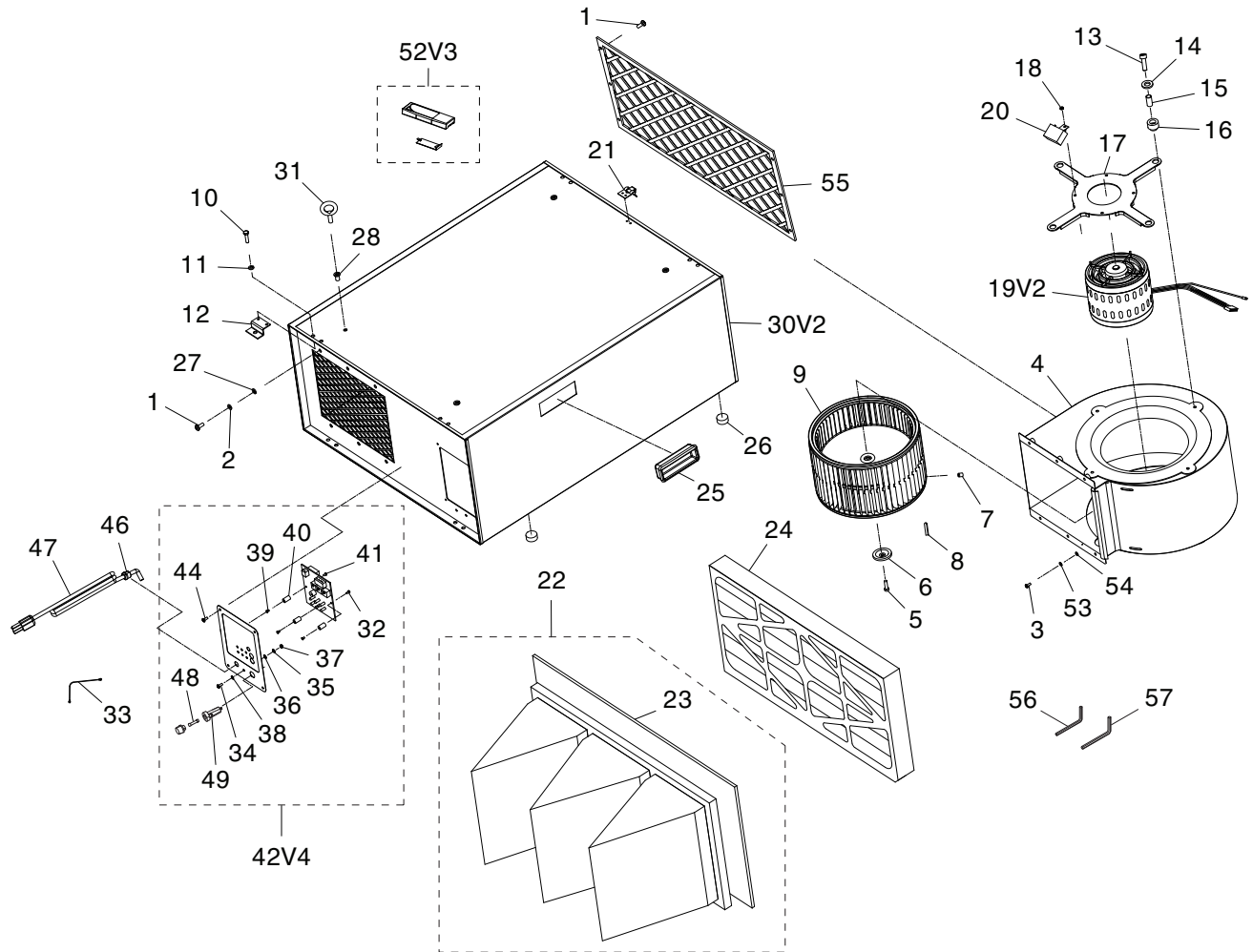


# SECTION 9: PARTS

We do our best to stock replacement parts when possible, but we cannot guarantee that all parts shown are available for purchase. Call (800) 523-4777 or visit [www.grizzly.com/parts](http://www.grizzly.com/parts) to check for availability.

## Main



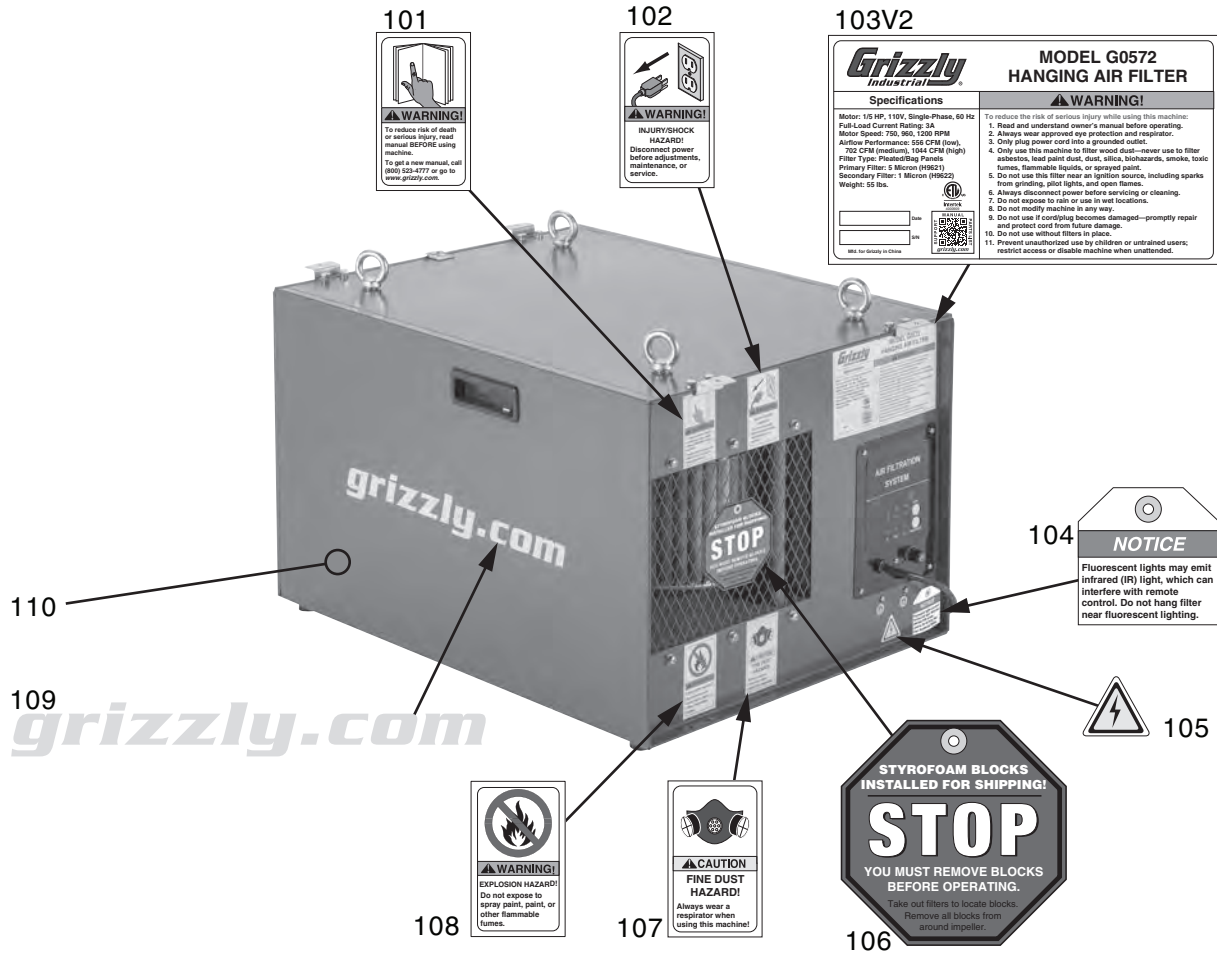
# Main Parts List

REF	PART #	DESCRIPTION
1	P0572001	PHLP HD SCR M6-1 X 16
2	P0572002	LOCK WASHER 6MM
3	P0572003	PHLP HD SCR M4-.7 X 8
4	P0572004	FAN HOUSING
5	P0572005	CAP SCREW M6-1 X 20 (LH)
6	P0572006	FLANGE DISC 6.5 X 44MM
7	P0572007	HEX BOLT M8-1.25 X 12
8	P0572008	KEY 4 X 4 X 20
9	P0572009	FAN
10	P0572010	HEX BOLT M6-1 X 10
11	P0572011	FLAT WASHER 6MM
12	P0572012	FLANGE BRACKET
13	P0572013	HEX BOLT M6-1 X 30
14	P0572014	FLAT WASHER 6MM
15	P0572015	SLEEVE
16	P0572016	SPACER
17	P0572017	FLANGE
18	P0572018	LOCK NUT M5-.8
19V2	P0572019V2	MOTOR 1/5HP 120V 1-PH V2.01.21
20	P0572020	R CAPACITOR 12M 450V
21	P0572021	FILTER RETAINING LATCH
22	P0572022	SECONDARY 1-MICRON INNER FILTER
23	P0572023	FOAM SEAL 1/4" X 1" X 70"
24	P0572024	PRIMARY 5-MICRON OUTER FILTER
25	P0572025	HANDLE
26	P0572026	RUBBER FOOT

REF	PART #	DESCRIPTION
27	P0572027	FLAT WASHER 6MM
28	P0572028	RIVET NUT M10-1.5
30V2	P0572030V2	HOUSING V2.01.21
31	P0572031	EYE BOLT M10-1.5 X 20
32	P0572032	CONTROL PANEL BOLT M3-.5 X 6
33	P0572033	PC WIRING HARNESS
34	P0572034	PHLP HD SCR M4-.7 X 6
35	P0572035	LOCK WASHER 4MM
36	P0572036	FLAT WASHER 4MM
37	P0572037	HEX NUT M4-.7
38	P0572038	EXT TOOTH WASHER 4MM
39	P0572039	CONTROL PANEL PHLP HD SCR
40	P0572040	PC BOARD SPACER
41	P0572041	PHLP HD SCR M3-.5 X 6
42V4	P0572042V4	CONTROL PANEL ASSEMBLY V4.01.21
44	P0572044	PHLP HD SCR M4-.7 X 10
46	P0572046	STRAIN RELIEF
47	P0572047	POWER CORD 18G 3W 5-15P
48	P0572048	FUSE 1-1/8" 5A 250V
49	P0572049	FUSE HOLDER
52V3	P0572052V3	REMOTE CONTROL V3.01.21
53	P0572053	FLAT WASHER 4MM
54	P0572054	LOCK WASHER 4MM
55	P0572055	STEEL MESHING
56	P0572056	HEX WRENCH 4MM
57	P0572057	HEX WRENCH 5MM



# Labels & Cosmetics



REF	PART #	DESCRIPTION
101	P0572101	READ MANUAL LABEL
102	P0572102	DISCONNECT POWER LABEL
103V2	P0572103V2	MACHINE ID LABEL V2.01.21
104	P0572104	FLUORESCENT BULB NOTICE TAG
105	P0572105	ELECTRICITY LABEL

REF	PART #	DESCRIPTION
106	P0572106	UNPACKING TAG
107	P0572107	FINE DUST LABEL
108	P0572108	EXPLOSION HAZARD LABEL
109	P0572109	GRIZZLY.COM LABEL
110	P0572110	TOUCH-UP PAINT, GRIZZLY GREEN

**! WARNING**

Safety labels help reduce the risk of serious injury caused by machine hazards. If any label comes off or becomes unreadable, the owner of this machine **MUST** replace it in the original location before resuming operations. For replacements, contact (800) 523-4777 or [www.grizzly.com](http://www.grizzly.com).

