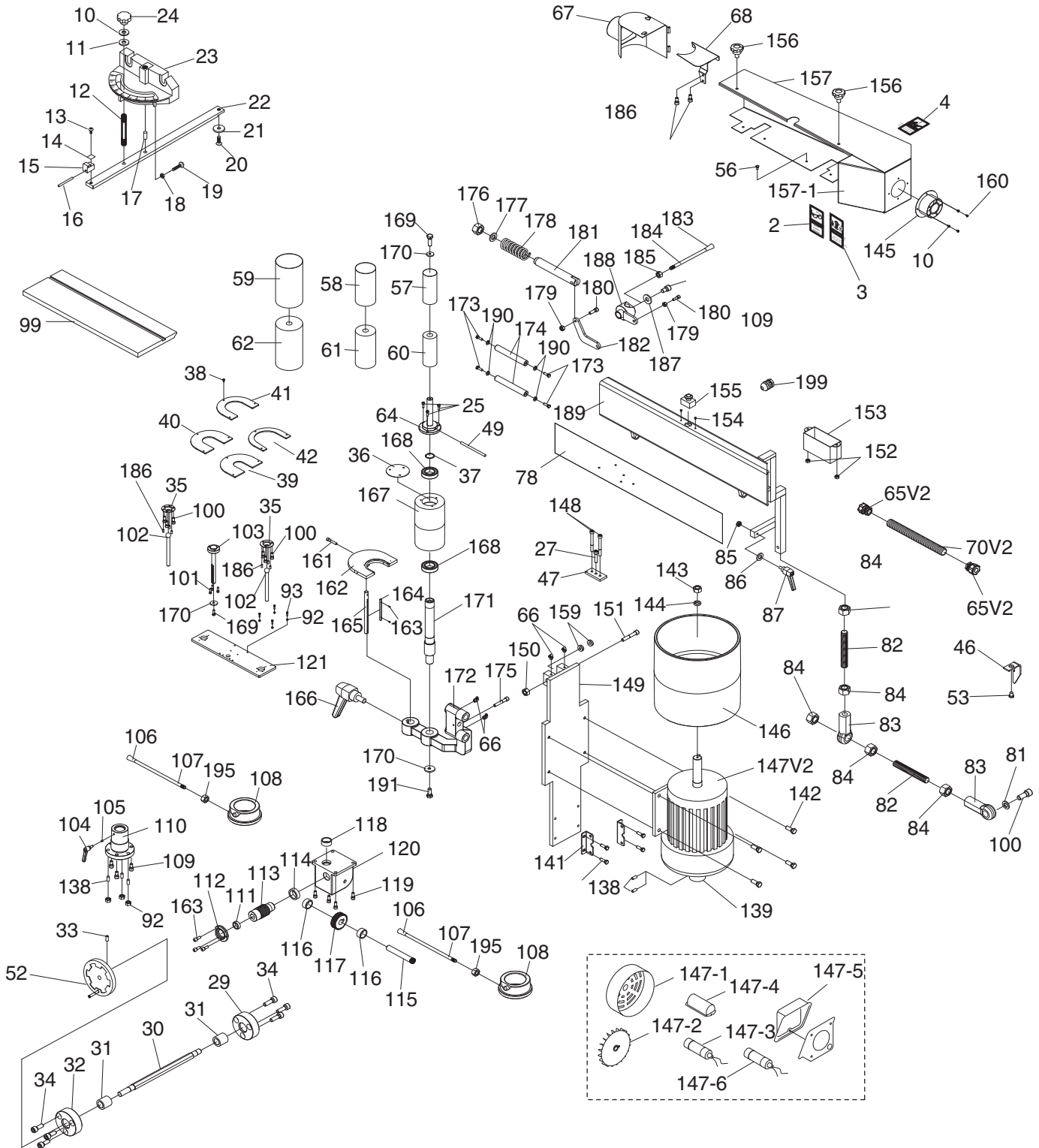
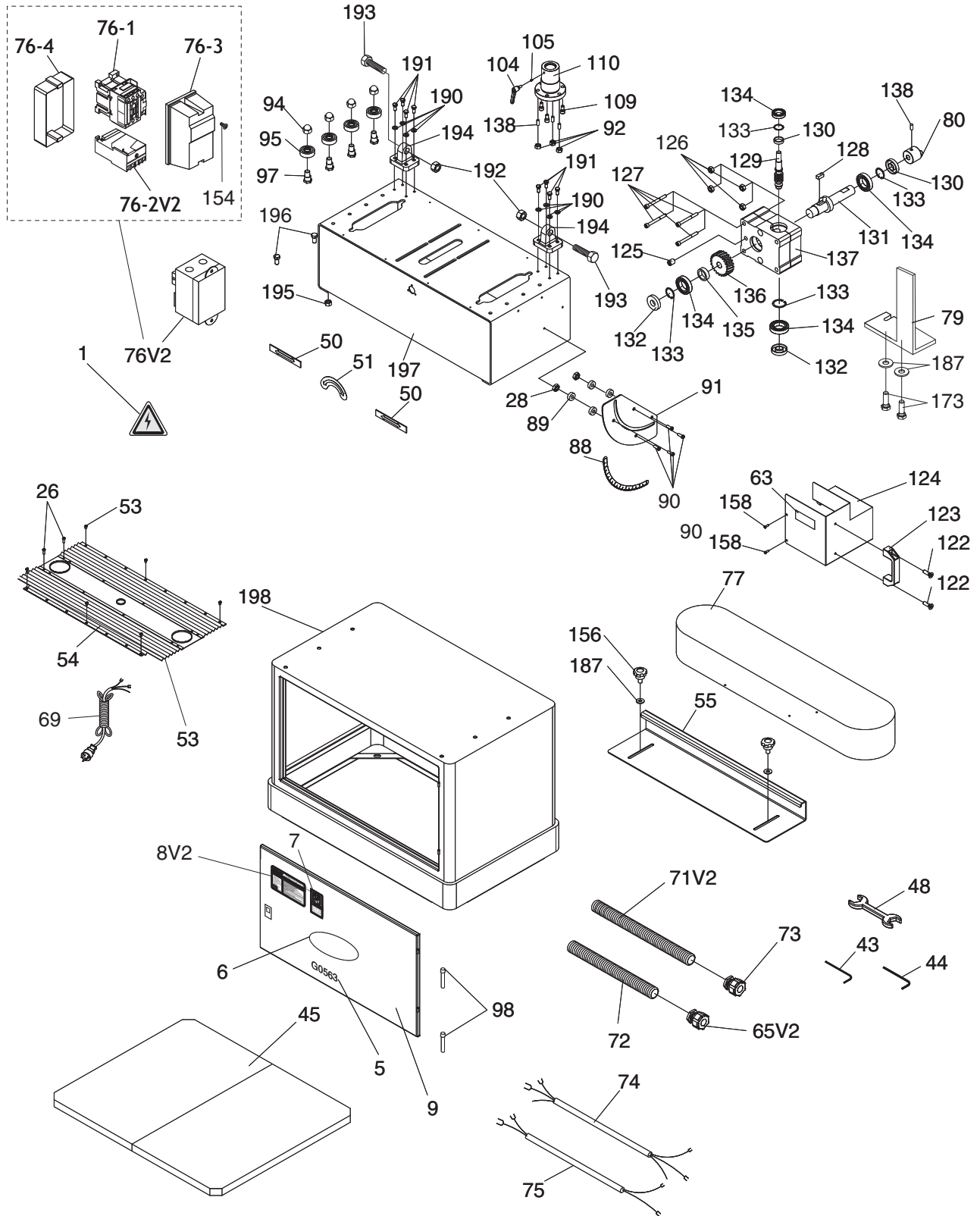


SECTION 9: PARTS

G0563 Breakdown



G0563 Breakdown



G0563 Parts List

REF	PART #	DESCRIPTION
1	P0563001	ELECTRICITY LABEL
2	P0563002	SAFETY GLASSES LABEL
3	P0563003	DUST HAZARD LABEL
4	P0563004	DISCONNECT LABEL
5	P0563005	MODEL NUMBER LABEL
6	P0563006	LOGO PLATE
7	P0563007	READ MANUAL LABEL
8V2	P0563008V2	MACHINE ID LABEL CSA V2.10.11
9	P0563009	DOOR W/LATCH
10	P0563010	FLAT WASHER 1/4
11	P0563011	WASHER 1/4 PLASTIC
12	P0563012	STUD 1/4-20 X 1-1/4
13	P0563013	PHLP HD SCR 10-24 X 1/4
14	P0563014	POINTER PLATE
15	P0563015	POINTER BODY
16	P0563016	STOP SHAFT
17	P0563017	PIVOT PIN
18	P0563018	HEX NUT 10-24
19	P0563019	PHLP HD SCR 10-24 X 3/4
20	P0563020	FLAT HD SCR 10-24 X 3/8
21	P0563021	T-SLOT WASHER
22	P0563022	MITER BAR
23	P0563023	MITER GAUGE BODY
24	P0563024	FEMALE KNOB 1/4-20
25	P0563025	CAP SCREW M5-.8 X 16
26	P0563026	PHLP HD SCR 10-24 X 3/4
27	P0563027	CAP SCREW 5/16-18 X 1-1/4
28	P0563028	HEX NUT 1/4-20
29	P0563029	HEX SPINDLE BACK COVER
30	P0563030	HEX SPINDLE
31	P0563031	SLEEVE
32	P0563032	HEX SPINDLE FRONT COVER
33	P0563033	SET SCREW 5/16-18 X 1/2
34	P0563034	CAP SCREW M6-1 X 16
35	P0563035	TABLE MOUNTING BRACKET
36	P0563036	IDLER ROLLER COVER
37	P0563037	EXT RETAINING RING 25MM
38	P0563038	FLAT HD SCR 10-24 X 3/8
39	P0563039	TABLE INSERT 1-1/2
40	P0563040	TABLE INSERT 2-1/2
41	P0563041	TABLE INSERT 3
42	P0563042	TABLE INSERT 4
43	P0563043	HEX WRENCH 5MM
44	P0563044	HEX WRENCH 6MM
45	P0563045	WOOD BOARD 25 X 395 X 457
46	P0563046	POINTER
47	P0563047	PLATE 70 X 31.7 X 5/16
48	P0563048	WRENCH 10 X 12MM OPEN-ENDS
49	P0563049	ROD
50	P0563050	TABLE ADJUSTMENT LABEL
51	P0563051	ROTATION LABEL
52	P0563052	HANDWHEEL
53	P0563053	PHLP HD SCR 10-24 X 3/8

REF	PART #	DESCRIPTION
54	P0563054	EXTENDABLE COVER
55	P0563055	FENCE
56	P0563056	HEX BOLT 1/4-20 X 1/4
57	P0563057	SANDING SLEEVE 1-1/2
58	P0563058	SANDING SLEEVE 2
59	P0563059	SANDING SLEEVE 3
60	P0563060	RUBBER DRUM 1-1/2
61	P0563061	RUBBER DRUM 2
62	P0563062	RUBBER DRUM 3
63	P0563063	ADJUSTMENT LABEL
64	P0563064	SANDING DRUM SPINDLE
65	P0563065	CONDUIT CONNECTOR 1/2" V1
65V2	P0563065V2	CONDUIT CONNECTOR 3/8" V2.09.11
66	P0563066	GREASE FITTING 1/8 30-DEG
67	P0563067	COVER FOR DUST PORT
68	P0563068	GUARD
69	P0563069	POWER CORD
70	P0563070	PLASTIC CONDUIT 1/2" V1
70V2	P0563070V2	PLASTIC CONDUIT 3/8 X 18" V2.09.11
71	P0563071	PLASTIC CONDUIT 1/2" V1
71V2	P0563071V2	PLASTIC CONDUIT 3/8 X 12" V2.09.11
72	P0563072	PLASTIC CONDUIT 3/8 X 11"
73	P0563073	CONDUIT CONNECTOR 3/8
74	P0563074	MOTOR POWER CORD
75	P0563075	EMERGENCY STOP POWER CORD
76V2	P0563076V2	MAGNETIC SWITCH V2.10.11
76-1	P0563076-1	CONTACTOR SDE MA-09 220-240V
76-2V2	P0563076-2V2	OL RELAY SDE RA-20 8-12A V2.10.11
76-3	P0563076-3	MAG SWITCH FRONT COVER
76-4	P0563076-4	MAG SWITCH REAR COVER
77	P0563077	SANDING BELT 6 X 89"
78	P0563078	GRAPHITE PAPER 30-1/4 X 6-3/4
79	P0563079	BACK STOP
80	P0563080	ECCENTRIC
81	P0563081	FLAT WASHER 1/4
82	P0563082	ADJUSTING ROD
83	P0563083	TIE ROD
84	P0563084	HEX NUT M14-2
85	P0563085	PLATEN NUT 3/8-16
86	P0563086	FLAT WASHER 3/8
87	P0563087	HANDLE 3/8-16 X 50
88	P0563088	ANGLE GAUGE LABEL
89	P0563089	MITER GAUGE SPACER
90	P0563090	FLAT HD SCR 1/4-20 X 3/4
91	P0563091	SCALE PLATE
92	P0563092	LOCK NUT 5/16-18
93	P0563093	CARRIAGE BOLT 5/16-18 X 1-1/4
94	P0563094	ACORN NUT 3/8-16
95	P0563095	BALL BEARING 6001ZZ
97	P0563097	ECCENTRIC BOLT
98	P0563098	HINGE PIN 8 X 45MM
99	P0563099	TABLE
100	P0563100	CAP SCREW 5/16-18 X 3/4



G0563 Parts List

REF	PART #	DESCRIPTION
101	P0563101	HEX BOLT 5/16-18 X 1
102	P0563102	SPINDLE
103	P0563103	RACK GEAR
104	P0563104	HANDLE 1/4 X 1/2
105	P0563105	INSERT 5 X 3 COPPER
106	P0563106	FEMALE KNOB 3/8-16
107	P0563107	HANDLE BAR
108	P0563108	LOCK COLLAR
109	P0563109	CAP SCREW 1/4-20 X 1/2
110	P0563110	SPINDLE SPACER
111	P0563111	BALL BEARING 38 X 42 X 20T
112	P0563112	PACKING
113	P0563113	PINION ROD
114	P0563114	RING COPPER
115	P0563115	PINION SPINDLE
116	P0563116	SPACER
117	P0563117	PINION GEAR
118	P0563118	RING COPPER
119	P0563119	CAP SCREW 5/16-18 X 3/4
120	P0563120	RACK & PINION BOX
121	P0563121	ADJUSTING PLATE
122	P0563122	PHLP HD SCR 1/4-20 X 5/8
123	P0563123	HANDLE
124	P0563124	GEAR BOX COVER
125	P0563125	SET SCREW NPT 1/8
126	P0563126	HEX NUT M8-1.25
127	P0563127	CAP SCREW M8-1.25 X 75
128	P0563128	KEY 7 X 7 X 16
129	P0563129	WORM SHAFT
130	P0563130	OIL SEAL W/HOLE
131	P0563131	DRIVE SHAFT
132	P0563132	OIL SEAL W/O HOLE
133	P0563133	INT RETAINING RING 35MM
134	P0563134	BALL BEARING 6202Z
135	P0563135	ALUMINUM RING
136	P0563136	WORM GEAR
137	P0563137	GEAR BOX
138	P0563138	SET SCREW 5/16-18 X 1/2
139	P0563139	SPINDLE CONNECTOR
140	P0563140	HEX BOLT 5/16-18 X 1/2
141	P0563141	GEAR BOX FIXING PLATE
142	P0563142	HEX BOLT 3/8-16 X 1
143	P0563143	HEX NUT 5/8-18
144	P0563144	LOCK WASHER 5/8
145	P0563145	DUST PORT 4"
146	P0563146	DRIVE ROLLER
147V2	P0563147V2	MOTOR 2HP 220V 1-PH V2.10.11
147-1	P0563147-1	FAN COVER
147-2	P0563147-2	FAN
147-3	P0563147-3	S CAPACITOR 400M 125V 1-3/4 X 3-7/8
147-4	P0563147-4	CAPACITOR COVER
147-5	P0563147-5	ELECTRICAL BOX
147-6	P0563147-6	R CAPACITOR 60M 250V 1-3/8 X 3-3/8
148	P0563148	CAP SCREW 1/4-20 X 1-3/4

REF	PART #	DESCRIPTION
149	P0563149	MOTOR BRACKET
150	P0563150	LOCK NUT M12-1.75
151	P0563151	HEX BOLT M12-1.75 X 75
152	P0563152	HEX NUT 10-24
153	P0563153	SWITCH COVER
154	P0563154	PHLP HD SCR 10-24 X 3/4
155	P0563155	EMERGENCY STOP SWITCH
156	P0563156	STAR KNOB 5/16-18 X 1
157	P0563157	PLATE COVER W/DOOR
157-1	P0563157-1	DRIVER ROLLER COVER
158	P0563158	CAP SCREW 1/4-20 X 1/2
159	P0563159	THRUST BALL BEARING 5101
160	P0563160	PHLP HD SCR 1/4-20 X 1/4
161	P0563161	CAP SCREW 3/8-16 X 3/4
162	P0563162	CAST IRON TABLE U-TYPE
163	P0563163	CAP SCREW M4-.7 X 10
164	P0563164	KEY 8 X 8 X 315
165	P0563165	TABLE SPINDLE
166	P0563166	KNOB 3/8-16 X 1
167	P0563167	IDLER ROLLER
168	P0563168	BALL BEARING 6205Z
169	P0563169	HEX BOLT 5/16-18 X 1/2
170	P0563170	ADJUSTING PLATE WASHER 5/16
171	P0563171	IDLER ROLLER SPINDLE
172	P0563172	IDLER ROLLER BRACKET
173	P0563173	HEX BOLT 5/16-18 X 1
174	P0563174	SHAFT
175	P0563175	CAP SCREW 1/4-20 X 1-1/4
176	P0563176	HEX NUT 5/8-11
177	P0563177	FLAT WASHER 5/8
178	P0563178	CONDENSED SPRING
179	P0563179	LOCK NUT 1/4-20
180	P0563180	CAP SCREW 1/4-20 X 3/4
181	P0563181	SPINDLE
182	P0563182	SPINDLE BRACKET
183	P0563183	FEMALE KNOB 1/2-13
184	P0563184	HANDLE BAR
185	P0563185	HEX NUT 1/2-12
186	P0563186	CAP SCREW 5/16-18 X 1/2
187	P0563187	FLAT WASHER 5/16
188	P0563188	TENSIONING LINK ARM
189	P0563189	PLATEN
190	P0563190	LOCK WASHER 5/16
191	P0563191	HEX BOLT 5/16-18 X 1/2
192	P0563192	LOCK NUT 3/4-10
193	P0563193	HEX BOLT 3/4-10 X 2-1/4
194	P0563194	SWIVEL BRACKET
195	P0563195	HEX NUT 3/8-16
196	P0563196	HEX BOLT 3/8-16 X 3/4
197	P0563197	GEAR BOX
198	P0563198	BASE
199	P0563199	STRAIN RELIEF
199	P0563199	STRAIN RELIEF

