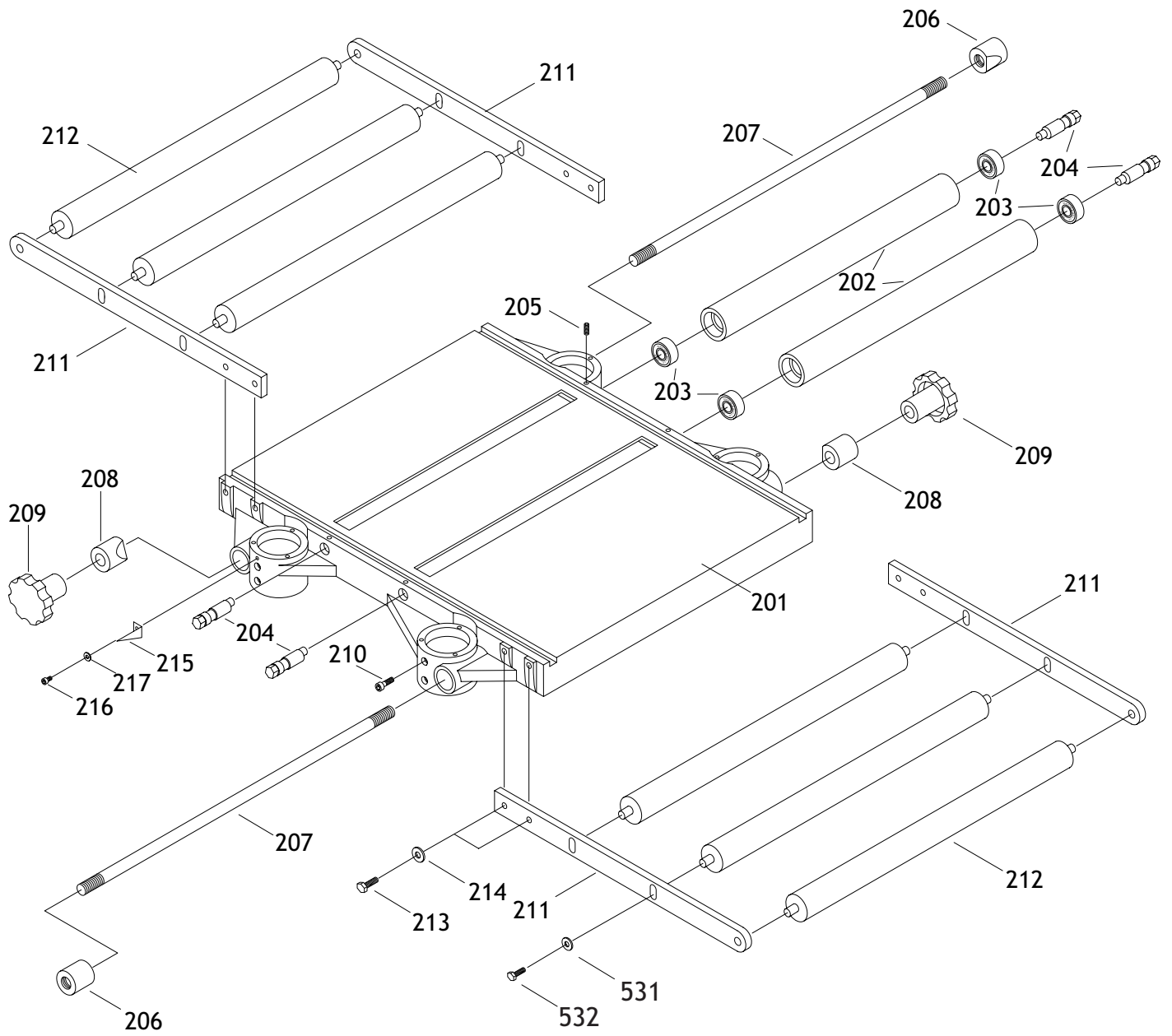
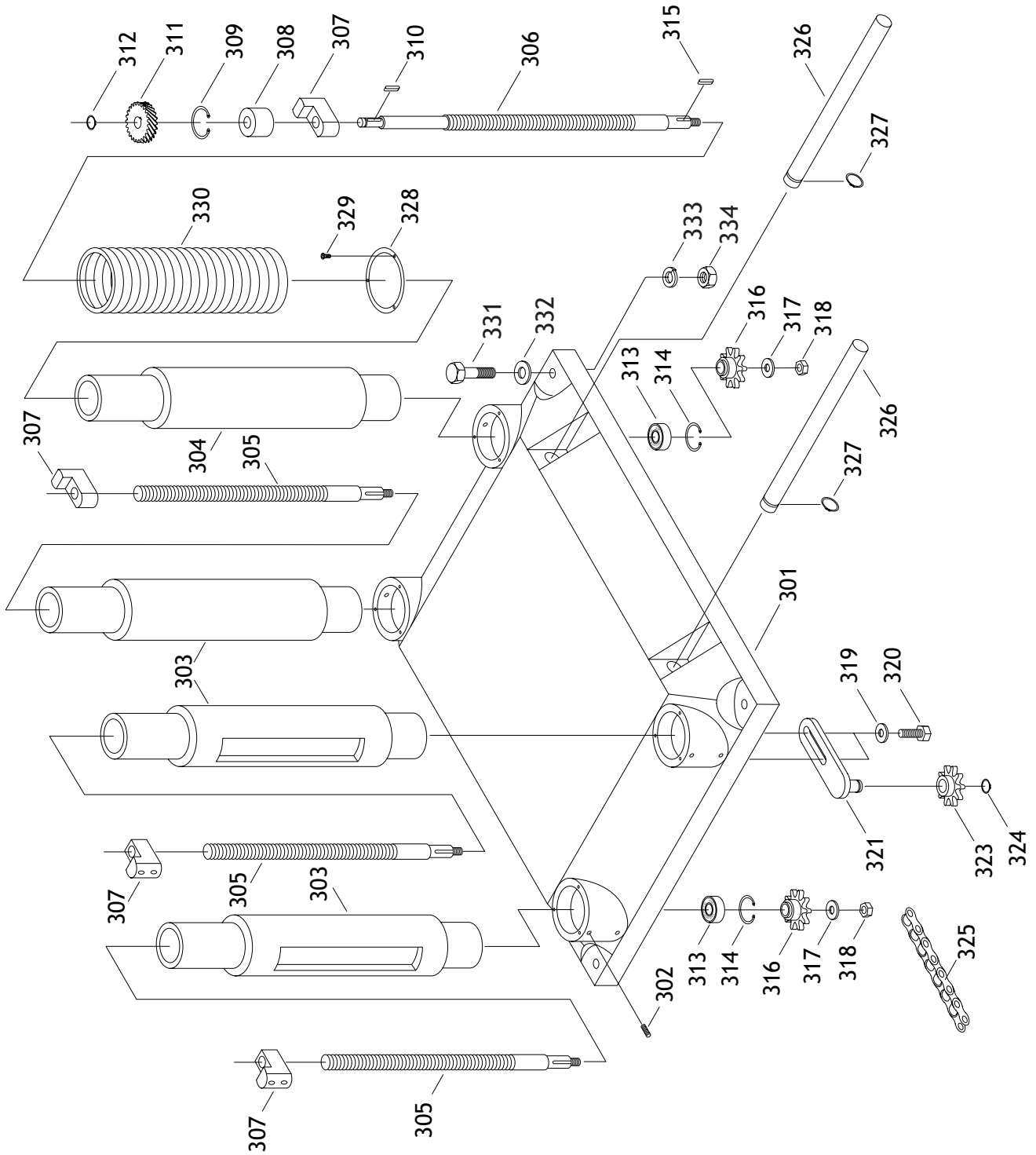
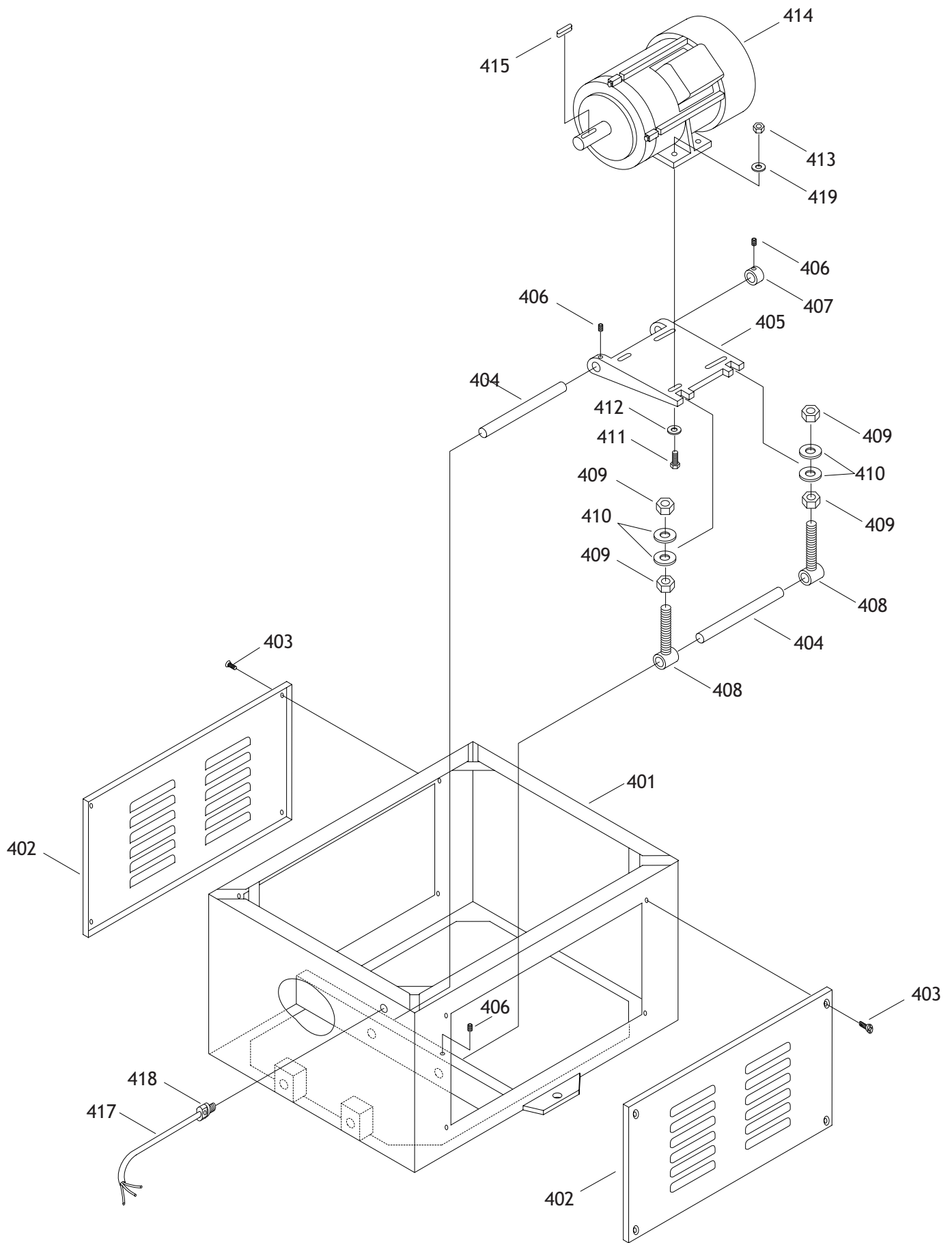


REF	PART #	DESCRIPTION
01	X1683001	HEADCASTING
02	XPSS13M	SETSCREW M10-1.5 X 12
03	X1683003	CUTTERHEAD
04	X1683004	SPRING
05	X1683005	BLADES FOR PLANER
06	X1683006	GIB
07	XPB17M	HEX BOLT M8-1.25 X 10
08	X1683008	KNIFE GAUGE W/BAR
09	X1683009	JACK SCREW
12	XP6206	BEARING 6206
13	XPK09M	KEY 8 X 8 X 36
14	X1683014	CUTTERHEAD PULLEY
15	X1683015	SPECIAL WASHER 5/16" X 1 3/16"
16	XPSS12M	SETSCREW M6-1.0 X 25
17	X1683017	MOTOR PULLEY
18	X1683018	INFEED ROLLER
19	X1683019	BUSHING BLOCK
20	X1683020	SPRING
21	X1683021	OILER SETSCREW
22	X1683022	PLATE
23	XPB09M	HEX BOLT M8-1.25 X 20
24	XPSS11M	SETSCREW M6-1.0 X 16
25	XPN01M	HEX NUT M6-1.0
26	XPK21M	KEY 5 X 5 X 23
29	XPB18M	HEX BOLT M6-1.0 X 15
30	X1683030	OUTFEED ROLLER
32	X1683032	LOCKING ROD
33	XPR03M	EXT RETAINING RING 12MM
34	X1683034	CHIP BREAKER
35	XPN09M	HEX NUT M12-1.75
36	X1683036	CHIP BREAKER SPRING
37	XPW03M	FLAT WASHER 6MM
38	XPB02M	HEX BOLT M6-1 X 12
39	X1683039	SHAFT
40	X1683040	BRACKET
41	X1683041	PRESSURE BAR
42	XPLW04M	LOCK WASHER 8MM
43	X1683043	SHAFT
44	XPSS11M	SETSCREW M6-1.0 X 16
46	X1683046	SPRING PLATE
47	X1683047	CHIP DEFLECTOR PLATE
48	X1683048	ANTI-KICKBACK FINGER
49	X1683049	SPACER
50	X1683050	SHAFT
51	XPEC06M	E-CLIP 20MM
52	X1683052	DEPTH LIMITER
53	XPFH02M	FLT HD SCR M6-1.0 X 12
54	X1683054	UPPER COVER
55	X1683055	GASKET

REF	PART #	DESCRIPTION
56	X1683056	DUST HOOD
57	X1683057	ROLLER STAND
58	X1683058	ROLLER
59	XPSB01M	CAP SCREW M6-1.0 X 16
60	X1683060	WORM GEAR BOX
61	XPSB37M	CAP SCREW M6-1.0 X 50
62	X1683062	WORM
63	XP6201	BEARING 6201
64	XPR29M	SNAP RING 32MM
65	XPK05M	KEY 4 X 4 X 10
66	X1683066	HANDWHEEL
67	X1683067	SPECIAL WASHER 1/2" X 1 1/8"
68	X1683068	HANDLE
69	X1683069	SCALE
70	XPS08M	PHLP HD SCR M5-0.8 X 12
73	X1683073	COVER
75	X1683075	SAFETY HATCH
76	XPB04M	HEX BOLT M6-1.0X10
77	X1683077	SAFETY HATCH
78	XPSB11M	CAP SCREW M8-1.25 X 16
79	X1683079	PULLEY GUARD
80	X1683080	STUD
81	XPW07	FLAT WASHER 5/16"
82	XPN02	HEX NUT 5/16" X 18
83	XPVM59	V-BELT M59 3L590
84	X1683084	PULLEY COVER
85	X1683085	KNOB
86	X1683086	SWITCH BRACKET
87	X1683087	MAGNETIC SWITCH
88	XPN06M	HEX NUT M5-0.8
89	X1672123	SHOP FOX PLAQUE
90	X1683090	RIVET
92	X1683092	STRAIN RELIEF
93	X1683093	POWER CORD
94	X1683094	STAR WASHER #10
95	XPSB04M	CAP SCREW M6-1.0 X 10
96	XPSS14M	SETSCREW M8-1.25 X 12
97	X1683097	RETAINER
98	X1683098	COLLAR
100	X1683100	W1683 ID/WARNING LABEL
101	X1677219	READ MANUAL LABEL
102	X1672497	SAFETY GLASSES LABEL
103	X1683103	EAR PROTECTION LABEL
104	X1683104	COVER REMOVAL LABEL
105	X1672498	ELECTRICITY LABEL
107	XPLW03M	LOCK WASHER 6MM
108	XPS09M	PHLP HD SCR M5-0.8 X 10
109	XPSW01-1	SWITCH COVER SCREW

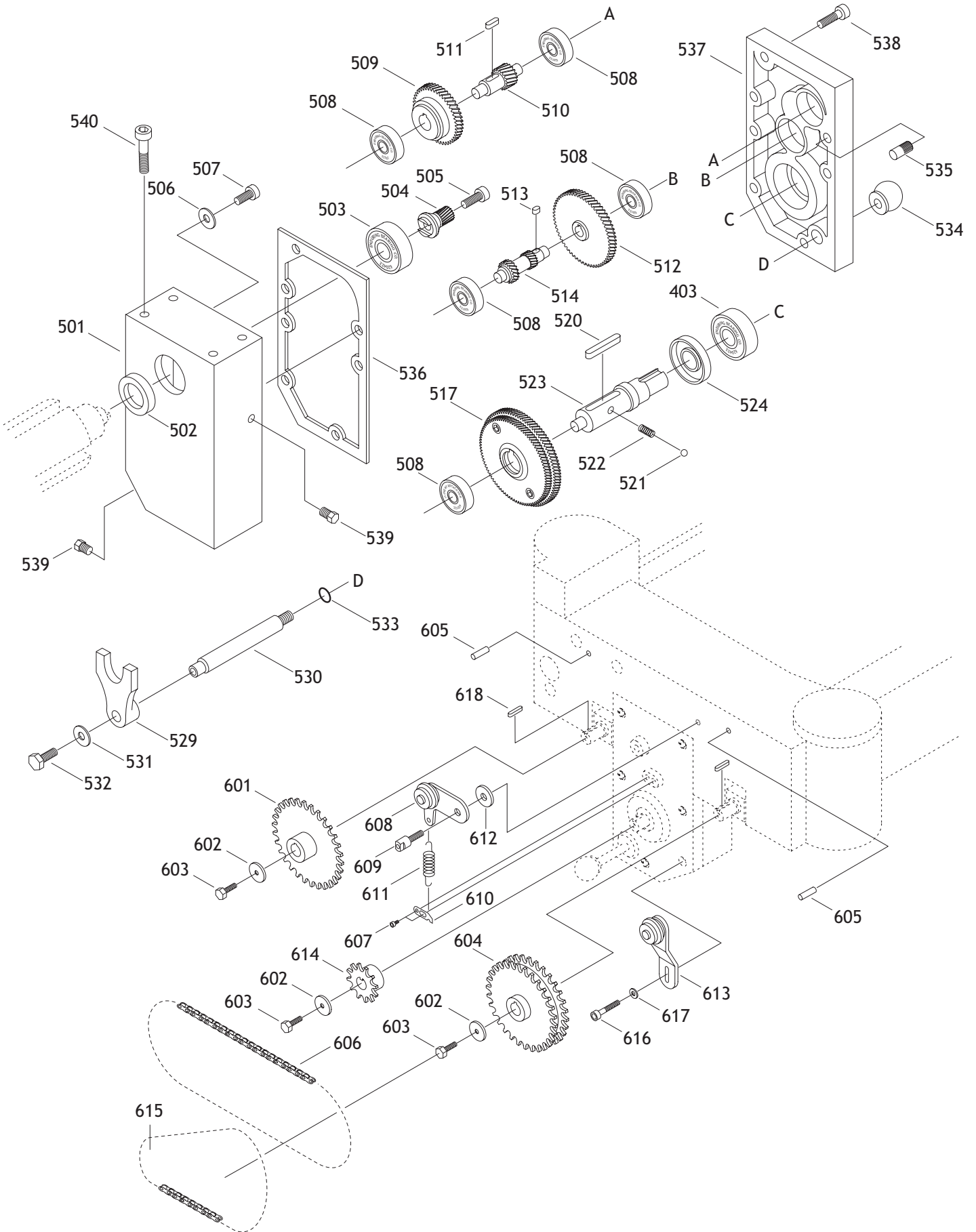






REF	PART #	DESCRIPTION
201	X1683201	MIDDLE TABLE
202	X1683202	ROLLER
203	XP6201	BEARING 6201
204	X1683204	ECCENTRIC SHAFT
205	XPSS04M	SETSCREW M6-1.0 X 12
206	X1683206	THREADED GIB
207	X1683207	LOCK ROD
208	X1683208	GIB
209	X1683209	KNOB
210	XPSB61M	CAP SCREW M10-1.25 X 20
211	X1683211	EXT ROLLER BAR
212	X1683212	EXTENSION ROLLER
213	XPB32M	HEX BOLT M10-1.5 X 25
214	XPW04M	FLAT WASHER 10MM
215	X1683215	POINTER
216	XPSB04M	CAP SCREW M6-1.0 X 10
217	XPLW03M	LOCK WASHER 6MM
301	X1683301	BASE
302	XPSS13M	SETSCREW M10-1.5 X 12
303	X1683303	COLUMN
304	X1683304	COLUMN
305	X1683305	LEADSCREW
306	X1683306	LEADSCREW
307	X1683307	LEADSCREW NUT
308	X1683308	BUSHING
309	XPR22M	INT RETAINING RING 38MM
310	XPK10M	KEY 5 X 5 X 12
311	X1683311	GEAR
312	XPR03M	EXT RETAINING RING 12MM
313	XP6202	BALL BEARING 6202
314	XPR21M	INT RETAINING RING 35MM
315	XPK08M	KEY 5 X 5 X 16
316	X1683316	SPROCKET
317	X1683317	WASHER

REF	PART #	DESCRIPTION
318	XPN08M	HEX NUT M10-1.25
319	XPW01M	FLAT WASHER 8MM
320	XPB07M	HEX BOLT M8-1.25 X 25
321	X1683321	BRACKET W/ SHAFT
323	X1683323	SPROCKET
324	XPR05M	SNAP RING 15MM
325	X1683325	CHAIN
326	X1683326	CRANE POST
327	XPR08M	EXT RETAINING RING 19MM
328	X1683328	PIPE BAND
329	PHTEK5	TAP SCREW 10-24 X 1/2"
330	X1683330	EXPANSION BAND
331	XPB33M	HEX BOLT M12-1.75 X 50
332	XPW06M	FLAT WASHER 12MM
333	XPLW05M	LOCK WASHER 12MM
334	XPN09M	HEX NUT M12-1.75
401	X1683401	STAND
402	X1683402	COVER
403	XPFH06M	FLAT HD SCREW M6-1.0 X 20
404	X1683404	BAR
405	X1683405	MOTOR MOUNT
406	XPSS20M	SETSCREW M8-1.25 X 8
407	X1683407	COLLAR
408	X1683408	ADJUSTABLE BOLT
409	XPN09M	HEX NUT M12-1.75
410	XPW01	FLAT WASHER 1/2"
411	XPB07M	HEX BOLT M8-1.25 X 25
412	X1683412	SPECIAL WASHER 5/16" X 7/8"
413	XPN03M	HEX NUT
414	X1683414	5HP MOTOR
415	XPK36M	KEY 5 X 5 X 50
417	X1683417	POWER CORD
418	X1683418	STRAIN RELIEF
419	XPW01M	FLAT WASHER 8MM



REF	PART #	DESCRIPTION
501	X1683501	GEAR BOX
502	X1683502	OIL SEAL 28-40-8
503	XP6204	BALL BEARING 6204
504	X1683503	GEAR
505	XPSB02M	CAP SCREW M6-1.0 X 20
506	X1683506	SPECIAL WASHER 1/4" X 7/8"
507	XPSB28M	CAP SCREW M6-1.0 X 15
508	XP6201	BALL BEARING 6201
509	X1683509	GEAR
510	X1683510	GEAR AND SHAFT
511	XPK10M	KEY 5 X 5 X 12
512	X1683512	GEAR
513	XPK06M	KEY 5 X 5 X 10
514	X1683514	GEAR, 2-SPEED
517	X1683517	DOUBLE GEAR
520	XPK11M	KEY 6 X 6 X 40
521	X1683521	BALL 6MM
522	X1683522	SPRING
523	X1683523	SHAFT
524	X1683524	OIL SEAL 25 X 47 X 7
529	X1683529	SHIFTER
530	X1683530	SHIFTING SHAFT HANDLE
531	XPW03M	FLAT WASHER 6MM
532	XPB02M	HEX BOLT M6-1.0 X 12
533	X1683533	O-RING 12MM

REF	PART #	DESCRIPTION
534	X1683534	KNOB
535	X1683535	PIN
536	X1683536	GASKET
537	X1683537	GEAR CASE
538	XPSB06M	CAP SCREW M6-1.0 X 25
539	X1683539	OIL PLUG
540	XPSB05M	CAP SCREW M8-1.25 X 50
601	X1683601	SPROCKET
602	X1683602	SPECIAL WASHER 1/4" X 7/8"
603	XPSB18M	CAP SCREW M4-0.7 X 8
604	X1683604	SPROCKET
605	XPRP07M	ROLL PIN 6X20
606	X1683606	CHAIN 33 LINKS
607	XPSB04M	CAP SCREW M6-1.0 X 10
608	X1683608	CHAIN TENSIONER
609	X1683609	SHAFT
610	X1683610	HANGER
611	X1683611	SPRING
612	X1683612	SPACER
613	X1683613	OUTER CHAIN TENSIONER
614	X1683614	SPROCKET
615	X1683615	CHAIN 25 LINKS
616	XPSB48M	CAP SCREW M6-1.0 X 35
617	XPW03M	FLAT WASHER 6MM