

Grizzly Industrial, Inc.®

EDGE SANDER MODEL G0512 PARTS LIST

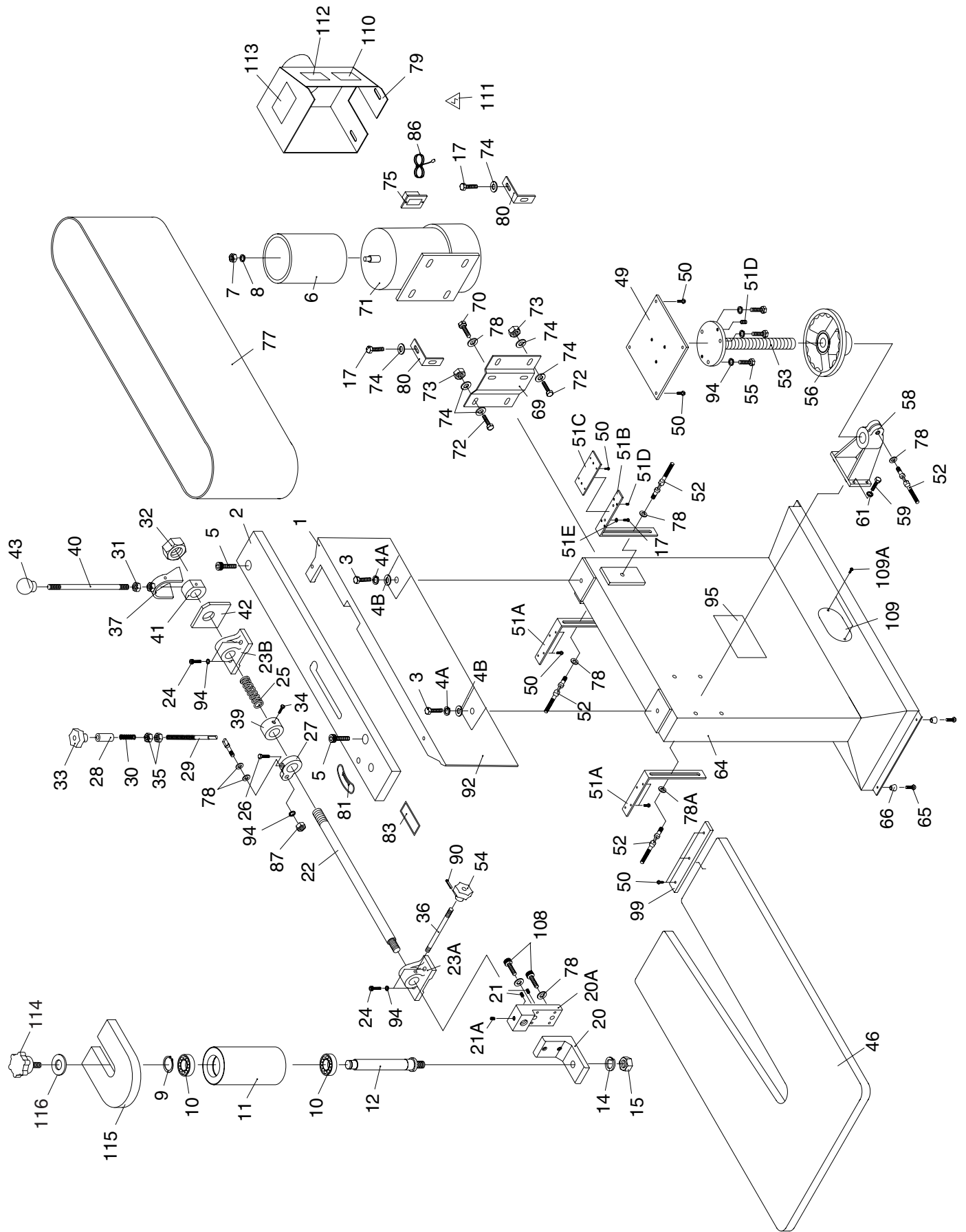


COPYRIGHT © MAY, 2003 BY GRIZZLY INDUSTRIAL, INC.
**WARNING: NO PORTION OF THIS MANUAL MAY BE REPRODUCED IN ANY SHAPE
OR FORM WITHOUT THE WRITTEN APPROVAL OF GRIZZLY INDUSTRIAL, INC.**
#528603624 PRINTED IN TAIWAN

ONLINE PARTS LIST DISCLAIMER

THESE PARTS REPRESENT THE CONFIGURATION OF THE MACHINE AS IT IS CURRENTLY BEING SHIPPED. THE MACHINE CONFIGURATION CAN CHANGE AS PRODUCT IMPROVEMENTS ARE INCORPORATED. IF YOU OWN AN EARLIER VERSION OF THE MACHINE, THIS PARTS LIST MAY NOT EXACTLY DEPICT YOUR MACHINE. CONTACT CUSTOMER SERVICE IF YOU HAVE ANY QUESTIONS ABOUT PART DIFFERENCES. PREVIOUS PARTS LIST VERSIONS ARE NOT AVAILABLE ONLINE.

Parts Breakdown and List



REF	PART #	DESCRIPTION
1	P0512001	PLATEN
2	P0512002	PLATEN COVER
3	PB16	HEX BOLT 3/8"-16 X 1 1/2"
4A	PLW06M	LOCK WASHER 10MM
4B	PW02	FLAT WASHER 3/8"
5	PSB14	CAP SCREW 3/8"-16 X 1"
6	P0512006	DRIVER ROLLER
7	PN09	HEX NUT 5/8"-18
8	PLW10M	LOCK WASHER 16MM
9	PR08M	EXT RETAINING RING 19MM
10	P0512010	BALL BEARING R12-Z
11	P0512011	RUBBER IDLER ROLLER
12	P0512012	ROLLER AXLE
14	PLW10M	LOCK WASHER 16MM
15	PN04	HEX NUT 5/8"-11
17	PB09	HEX BOLT 5/16"-18 X 1/2"
20	P0512020	ROLLER SUPPORT BRACKET
20A	P0512020A	ROLLER BLOCK BRACKET
21	PSS10	SET SCREW 1/4"-20 X 5/8"
21A	P0512021A	SPECIAL SCREW 1/4"-20 X 5/8"
22	P0512022	BELT ADJUST SHAFT
23A	P0512023A	ADJUST SHAFT SLIDE (A)
23B	P0512023B	ADJUST SHAFT SLIDE (B)
24	PSB03	CAP SCREW 5/16"-18 X 1
25	P0512025	SPRING
26	PB07	HEX BOLT 5/16"-18 X 3/4"
27	P0512027	ARM CONTROL CASTING
28	P0512028	SLEEVE
29	P0512029	CONTROL SHAFT
30	P0512030	SPRING
31	PN13	HEX NUT 1/2"-13
32	PN22	HEX NUT 1-8
33	P0512033	TILT KNOB 3/8"
34	PB21	HEX BOLT 3/8"-16 X 3/4"
35	PN08	HEX NUT 3/8"-16
36	P0512036	LOCK KNOB STUD 3/8" X 5 3/8"
37	P0512037	SWIVEL ASSEMBLY
39	P0512039	COLLAR
40	P0512040	LEVER
41	P0512041	SWIVEL ASSEMBLY
42	P0512042	PLATE
43	P0512043	HANDLE 1/2"
46	P0512046	TABLE
49	P0512049	PARTITION
50	PHTEK11	PHLP HD TAP SCREW #8 X 3/4"
51A	P0512051A	TABLE SUPP BRACKET (A)
51B	P0512051B	TABLE SUPP BRACKET (B)
51C	P0512051C	ADJUSTMENT PLATE

REF	PART #	DESCRIPTION
51D	PSS02	SETSCREW 5/16"-18 X 3/8"
52	P0512052	SWIVEL HANDLE 3/8" X 1 1/4"
53	P0512053	LEAD SCREW
54	P0512054	KNOB 3/8"
55	PB32	HEX BOLT 5/16"-18 X 5/8"
56	P0512056	HAND WHEEL
58	P0512058	SPLIT CASTING
59	PB18	HEX BOLT 3/8"-16 X 1"
61	PLW06M	LOCK WASHER 10MM
64	P0512064	STAND
65	PS22	PHLP HD SCR 10-24 X 5/8"
66	P0512066	RUBBER FOOT
69	P0512069	MOTOR BRACKET
70	PB18	HEX BOLT 3/8"-16 X 1"
71	P0512071	MOTOR 1 1/2HP
71-1	P0512071-1	MOTOR FAN COVER
71-2	P0512071-2	MOTOR FAN
71-3	P0512071-3	MOTOR WIRING CAP
71-4	PC400A	CAPACITOR 400MFD 125VAC
71-5	P0512071-5	CAPACITOR COVER
72	PB12	HEX BOLT 5/16"-18 X 1 1/4"
73	PN02	HEX NUT 5/16"-18
74	PW07	FLAT WASHER 5/16"
75	G8988	SWITCH
77	G1532	SANDING BELT 6" X 80"
78	PW02	FLAT WASHER 3/8"
79	P0512079	DUST COLLECTION HOOD
80	P0512080	LEFT BRACKET
81	P0512081	TRACKING ARROW LABEL
83	P0512083	TRACKING LOCK LABEL
86	PWRCRD220L	POWER CORD 2 POLE/3 WIRE
87	PN08	HEX NUT 3/8"-16
90	PRP37M	ROLL PIN 3 X 14
92	P0512092	GRAPHITE PAD
94	PLW04M	LOCK WASHER 8MM
95	P0512095	MACHINE ID LABEL
99	P0512099	BACK STOP
108	PSB26	CAP SCREW 3/8"-16 X 1 1/2"
109	G8588	GRIZZLY LOGO PLATE
109A	PHTEK10	TAP SCREW #8 X 5/8"
110	PLABEL-12	READ MANUAL LABEL
111	PLABEL-14	ELECTRICITY LABEL
112	PLABEL-11	SAFETY GLASSES LABEL
113	PLABEL-13	UNPLUG SANDER LABEL
114	P0512114	SMALL STAR KNOB
115	P0512115	IDLER ROLLER COVER
116	PW06	FLAT WASHER 1/4"